

KEY MAP

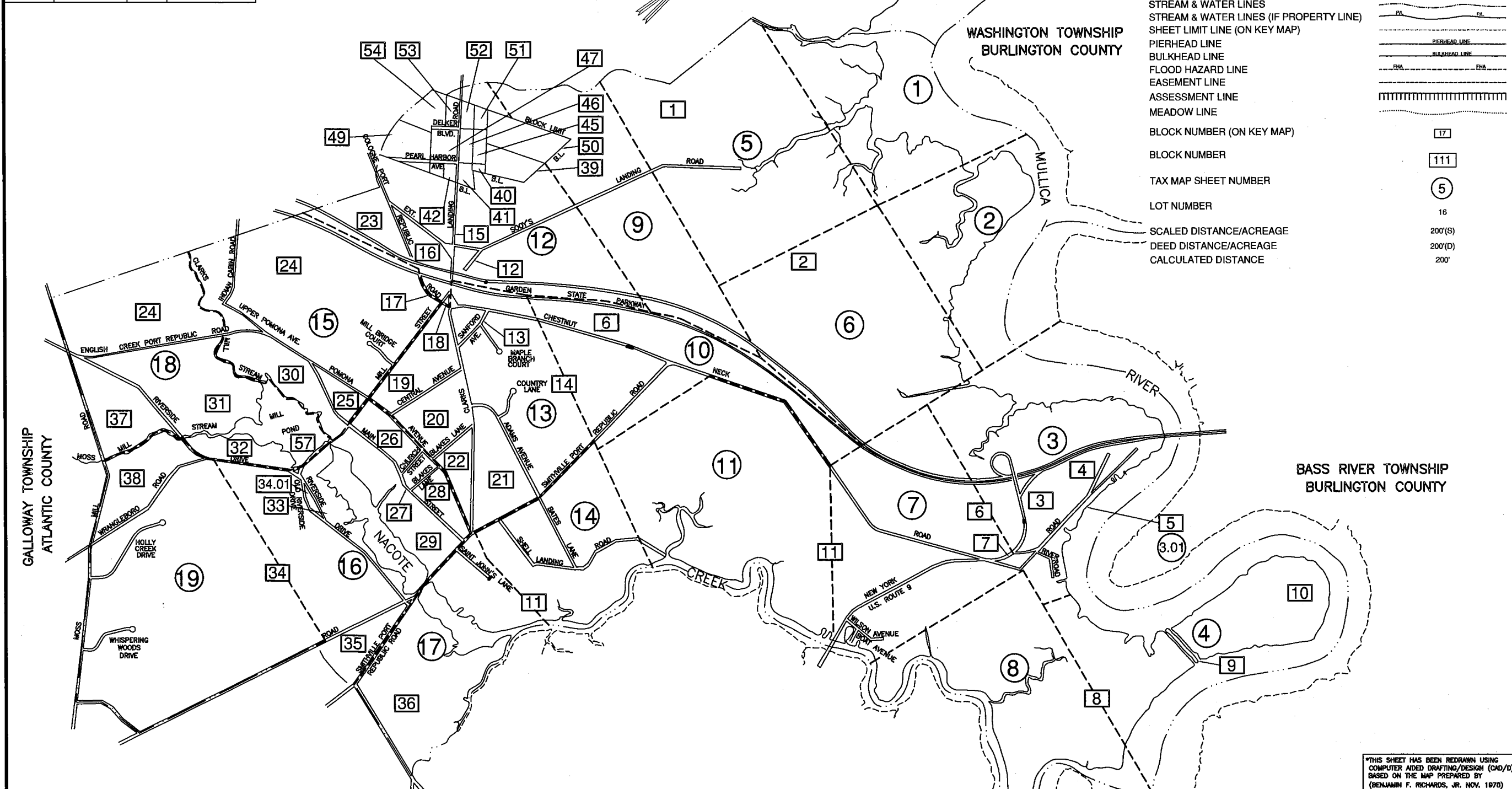
REVISIONS			
DATE	BY	LIC. No.	COMMENTS
10/8/86	MATTHEW F. DORAN	26273	B.L. 11, BATES LANE, SHELL
2-17-85	REV. DEER LANE REMOVED		
5-27-87	REV. PORTION FOURTH AVE VACATION		
5-27-87	REV. PORTION FOURTH AVE VACATION		
7-12-00	REV.		
12-7-00	REV.		
5-14-01	REV.		
1/17/2014	MATTHEW F. DORAN	26273	REVALUATION

TOWNSHIP OF GALLOWAY ATLANTIC COUNTY

WASHINGTON TOWNSHIP BURLINGTON COUNTY

LEGEND

COUNTY BOUNDARY LINE	-----
MUNICIPAL BOUNDARY LINE	-----
ARTIFICIAL BLOCK LIMIT	-----
FORMER PROPERTY LINE	-----
STREAM & WATER LINES	~~~~~
STREAM & WATER LINES (IF PROPERTY LINE)	~~~~~
SHEET LIMIT LINE (ON KEY MAP)	-----
PIERHEAD LINE	-----
BULKHEAD LINE	-----
FLOOD HAZARD LINE	-----
EASEMENT LINE	-----
ASSESSMENT LINE	-----
MEADOW LINE	-----
BLOCK NUMBER (ON KEY MAP)	17
BLOCK NUMBER	111
TAX MAP SHEET NUMBER	5
LOT NUMBER	16
SCALED DISTANCE/ACREAGE	200'(S)
DEED DISTANCE/ACREAGE	200'(D)
CALCULATED DISTANCE	200'



TOWNSHIP OF GALLOWAY ATLANTIC COUNTY

TAX MAP
CITY OF PORT REPUBLIC
ATLANTIC COUNTY NEW JERSEY
SCALE 1"=200' NOVEMBER 15, 1978
BENJAMIN F. RICHARDS, JR. PE & LS
217 WEST MAIN STREET
MAYS LANDING, NEW JERSEY 08330
TO SHOW CONDITIONS AS OF JAN. 1, 2014

I HEREBY CERTIFY THAT THIS MAP AND THE SURVEY HAS BEEN REVISIONED UNDER MY IMMEDIATE SUPERVISION AND COMPLIES WITH THE LAWS OF THE STATE OF NEW JERSEY.

MATTHEW F. DORAN, P.E. & P.L.S. No. 26273

NOTES:
1. THE AREA BOUNDARIES AND DIMENSIONS SHOWN ON THIS TAX MAP ARE DERIVED FROM GROUND SURVEYS, AERIAL SURVEYS, AND RECORDED PLANS, MAPS, DEEDS, AND WILLS AND ARE TO BE USED FOR ASSESSMENT PURPOSES ONLY.
2. THIS TAX MAP SUPERSEDES THE TAX MAP APPROVED DATE: OCTOBER 31, 1931
3. THIS SHEET HAS BEEN DRAWN USING COMPUTER AIDED DRAFTING/DESIGN (CAD/D).

THIS MAP WAS FORMALLY APPROVED ON APRIL 27, 1981 BY J. H. DITMAR WITH SERIAL NUMBER 597. THE ORIGINAL APPROVED MAP IS ON FILE IN THE OFFICE OF DORAN ENGINEERING, MATTHEW F. DORAN P.E., P.L.S. N.J. L.S. NO 26273.

*THIS SHEET HAS BEEN REDRAWN USING COMPUTER AIDED DRAFTING/DESIGN (CAD/D) BASED ON THE MAP PREPARED BY (BENJAMIN F. RICHARDS, JR. NOV. 1978)

KEY MAP

REVISIONS			
DATE	BY	LIC. No.	COMMENTS

WASHINGTON TOWNSHIP
BURLINGTON COUNTY



BASS RIVER TOWNSHIP
BURLINGTON COUNTY

8320± TOTAL

2

1
557.37 Ac. TOTAL
543.21 Ac. FPA&M

MULLICA

RIVER

EXEMPTED
STATE OF NEW JERSEY
FISH & GAME COMMISSION

SHEET 1
MATCHES

SHEET 3

MATCHES SHEET 6

*THIS SHEET HAS BEEN REDRAWN USING
COMPUTER AIDED DRAFTING/DESIGN (CAD/D)
BASED ON THE MAP PREPARED BY
(BENJAMIN F. RICHARDS, JR. NOV. 1978)

THIS MAP WAS FORMALLY APPROVED ON
APRIL 27, 1981 BY J. H. DIMAS WITH
SERIAL NUMBER 067. THE ORIGINAL
APPROVED MAP IS ON FILE IN THE OFFICE
OF DORAN ENGINEERING, MATTHEW F.
DORAN P.E., P.L.S. N.J. L.S. NO 28273.

TAX MAP
CITY OF PORT REPUBLIC
ATLANTIC COUNTY NEW JERSEY
SCALE 1"=200' NOVEMBER 15, 1978
BENJAMIN F. RICHARDS, JR. PE & LS
217 WEST MAIN STREET
MAYS LANDING, NEW JERSEY 08330
TO SHOW CONDITIONS AS OF JAN. 1, 2014

REVISIONS			
DATE	BY	LIC. No.	COMMENTS

BASS RIVER TOWNSHIP
BURLINGTON COUNTY



MULLICA

RIVER

9

EXEMPT
UNITED STATES OF AMERICA
FORSYTHE REFUGE

EXEMPT
UNITED STATES OF AMERICA
FORSYTHE REFUGE

8

5

381.57 Ac. Total
352.28 Ac. F.P.A. Total
333.01 Ac. M. Total

10

EXEMPT
UNITED STATES OF AMERICA
FORSYTHE REFUGE

1

104.90 Ac

620'±
310'±
310'±
840'±
1.5 AC

2800'± (Total)

MULLICA

RIVER

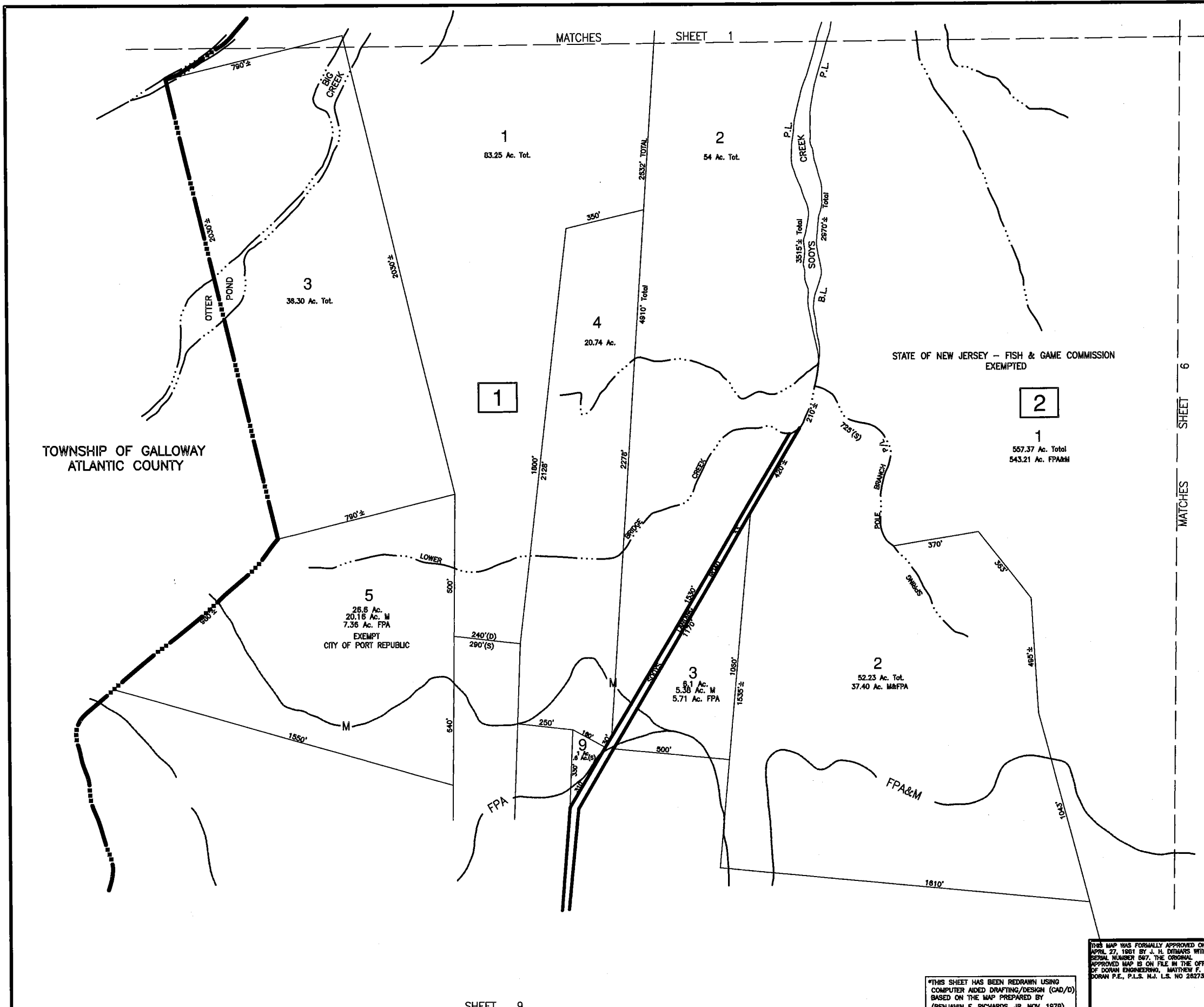
BASS RIVER TOWNSHIP
BURLINGTON COUNTY

TAX MAP
 CITY OF PORT REPUBLIC
 ATLANTIC COUNTY NEW JERSEY
 SCALE 1"=200' NOVEMBER 15, 1978
 BENJAMIN F. RICHARDS, JR. PE & LS
 217 WEST MAIN STREET
 MAYS LANDING, NEW JERSEY 08330
 TO SHOW CONDITIONS AS OF JAN. 1, 2014

THIS MAP WAS FORMALLY APPROVED ON
 APRIL 27, 1951 BY J. H. DUNN WITH
 SERIAL NUMBER 507. THE ORIGINAL
 APPROVED MAP IS ON FILE IN THE OFFICE
 OF CORAN ENGINEERING, MATTHEW F.
 CORAN P.E., P.L.S. N.J. L.S. NO 28273.

THIS SHEET HAS BEEN REDRAWN USING
 COMPUTER AIDED DRAFTING/DESIGN (CAD/D)
 BASED ON THE MAP PREPARED BY
 (BENJAMIN F. RICHARDS, JR. NOV. 1978)

REVISIONS			
DATE	BY	LIC. No.	COMMENTS



TOWNSHIP OF GALLOWAY ATLANTIC COUNTY

STATE OF NEW JERSEY - FISH & GAME COMMISSION EXEMPTED

EXEMPT CITY OF PORT REPUBLIC

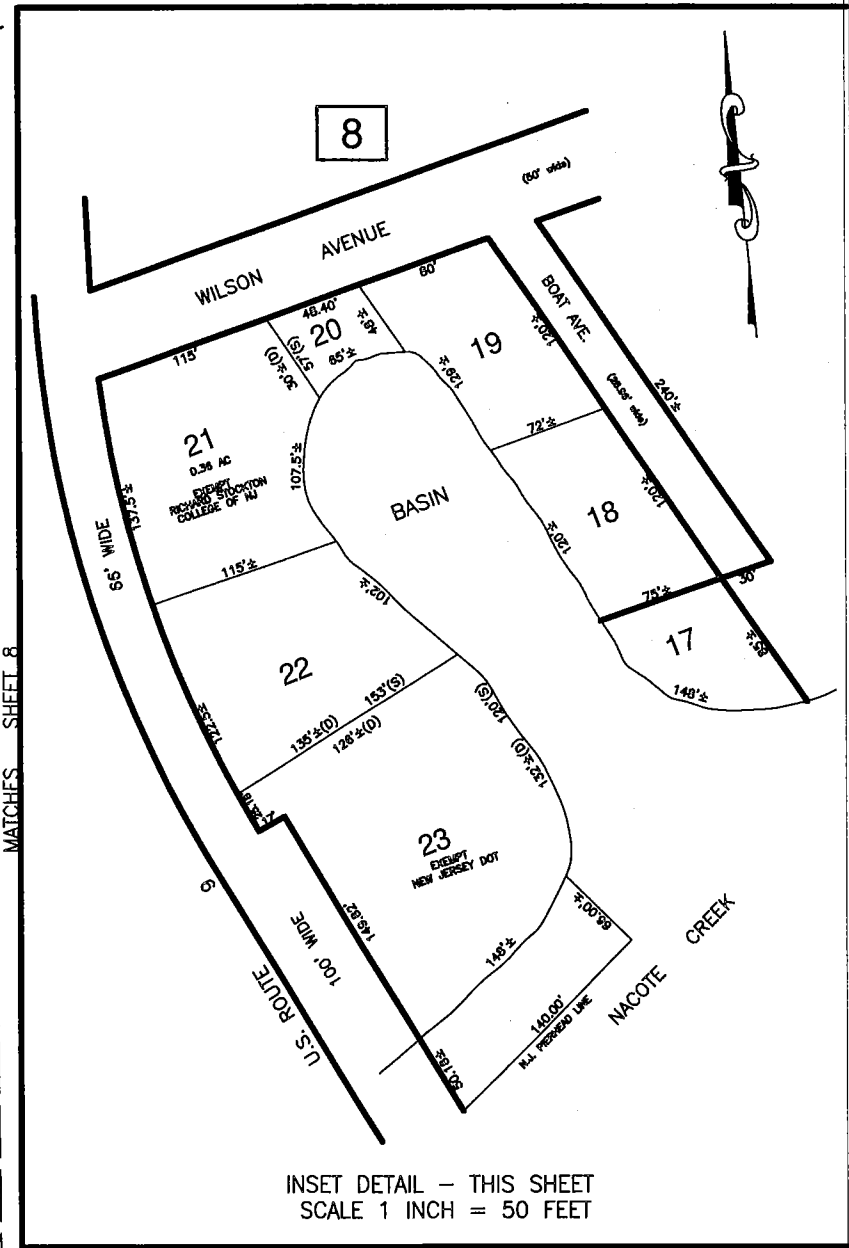
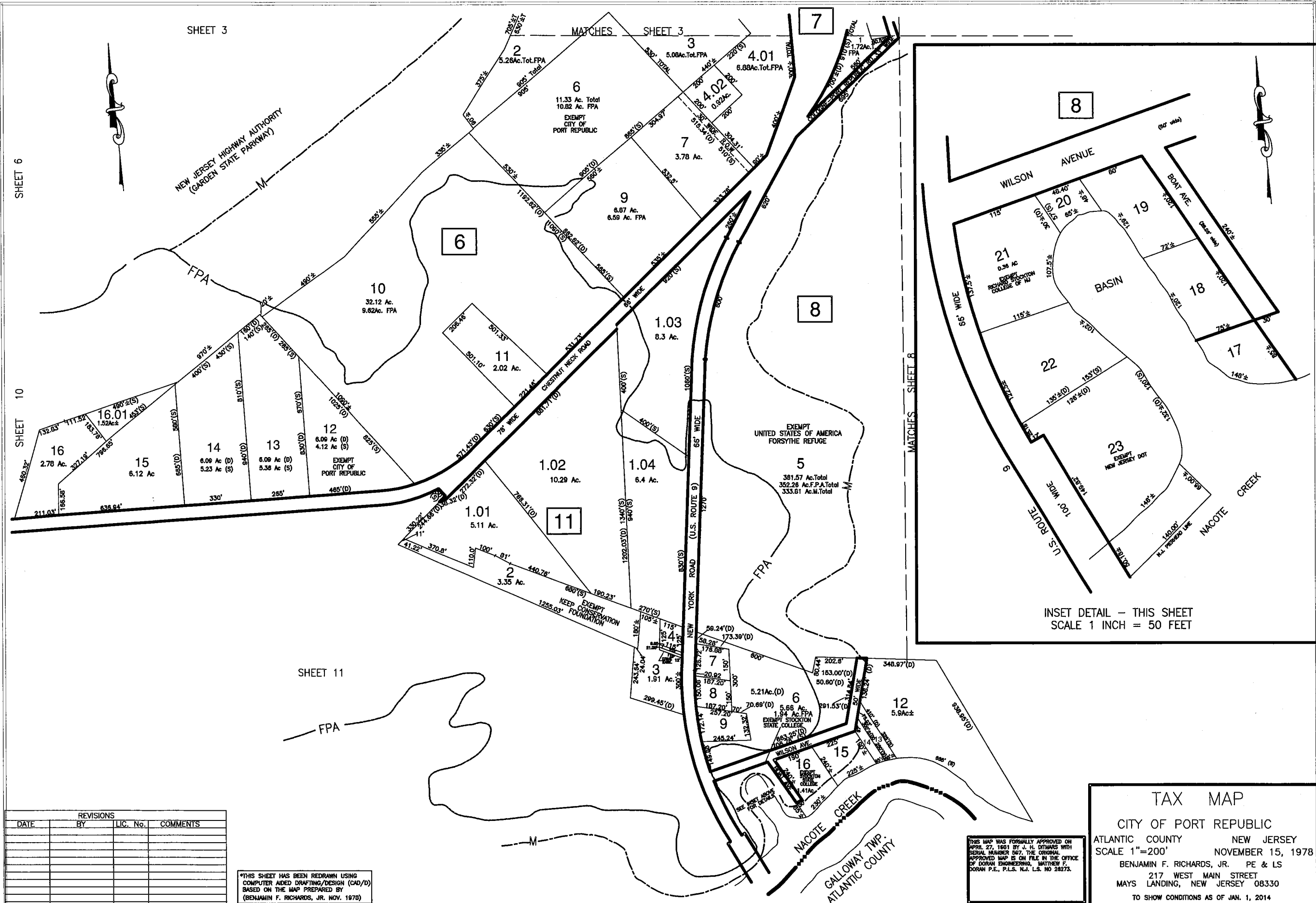
FPA&M

SHEET 9

THIS SHEET HAS BEEN REDRAWN USING COMPUTER AIDED DRAFTING/DESIGN (CAD/D) BASED ON THE MAP PREPARED BY (BENJAMIN F. RICHARDS, JR. NOV. 1978)

THIS MAP WAS FORMALLY APPROVED ON APRIL 27, 1981 BY J. H. DYMARS WITH SERIAL NUMBER 587. THE ORIGINAL APPROVED MAP IS ON FILE IN THE OFFICE OF DORAN ENGINEERING, MATTHEW F. DORAN P.E., P.L.S. N.J. L.S. NO 28273.

TAX MAP
 CITY OF PORT REPUBLIC
 ATLANTIC COUNTY NEW JERSEY
 SCALE 1"=200' NOVEMBER 15, 1978
 BENJAMIN F. RICHARDS, JR. PE & LS
 217 WEST MAIN STREET
 MAYS LANDING, NEW JERSEY 08330
 TO SHOW CONDITIONS AS OF JAN. 1, 2014



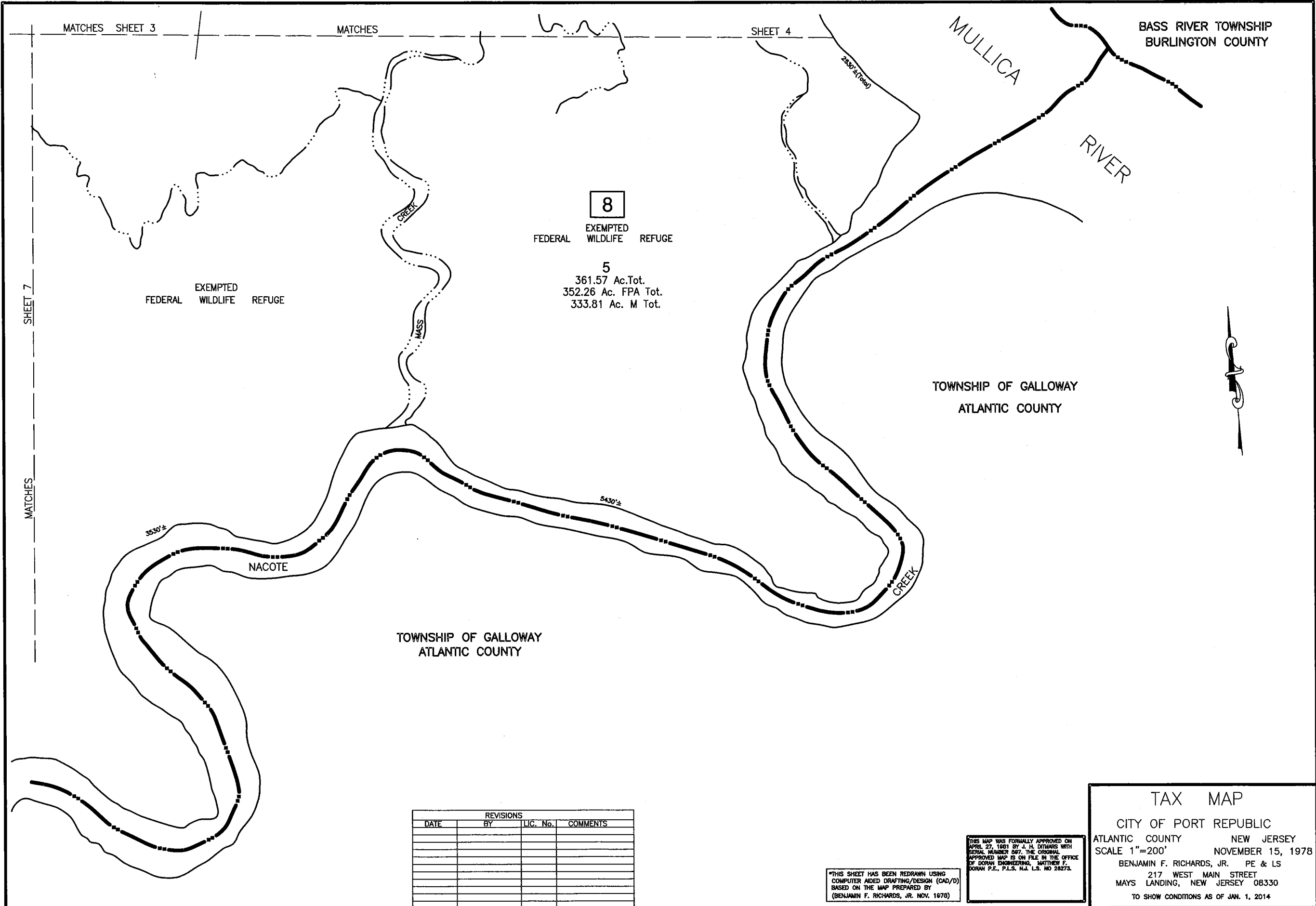
INSET DETAIL - THIS SHEET
SCALE 1 INCH = 50 FEET

REVISIONS			
DATE	BY	LIC. No.	COMMENTS

*THIS SHEET HAS BEEN REDRAWN USING
COMPUTER AIDED DRAFTING/DESIGN (CAD/D)
BASED ON THE MAP PREPARED BY
(BENJAMIN F. RICHARDS, JR. NOV. 1970)

THIS MAP WAS FORMALLY APPROVED ON
APRIL 27, 1981 BY J. H. DITMARS WITH
SERIAL NUMBER 567. THE ORIGINAL
APPROVED MAP IS ON FILE IN THE OFFICE
OF DORAN ENGINEERING, MATTHEW F.
DORAN P.E., P.L.S. N.J. L.S. NO 28273.

TAX MAP
CITY OF PORT REPUBLIC
ATLANTIC COUNTY NEW JERSEY
SCALE 1"=200' NOVEMBER 15, 1978
BENJAMIN F. RICHARDS, JR. PE & LS
217 WEST MAIN STREET
MAYS LANDING, NEW JERSEY 08330
TO SHOW CONDITIONS AS OF JAN. 1, 2014



8
 FEDERAL EXEMPTED WILDLIFE REFUGE
 5
 361.57 Ac. Tot.
 352.26 Ac. FPA Tot.
 333.81 Ac. M Tot.

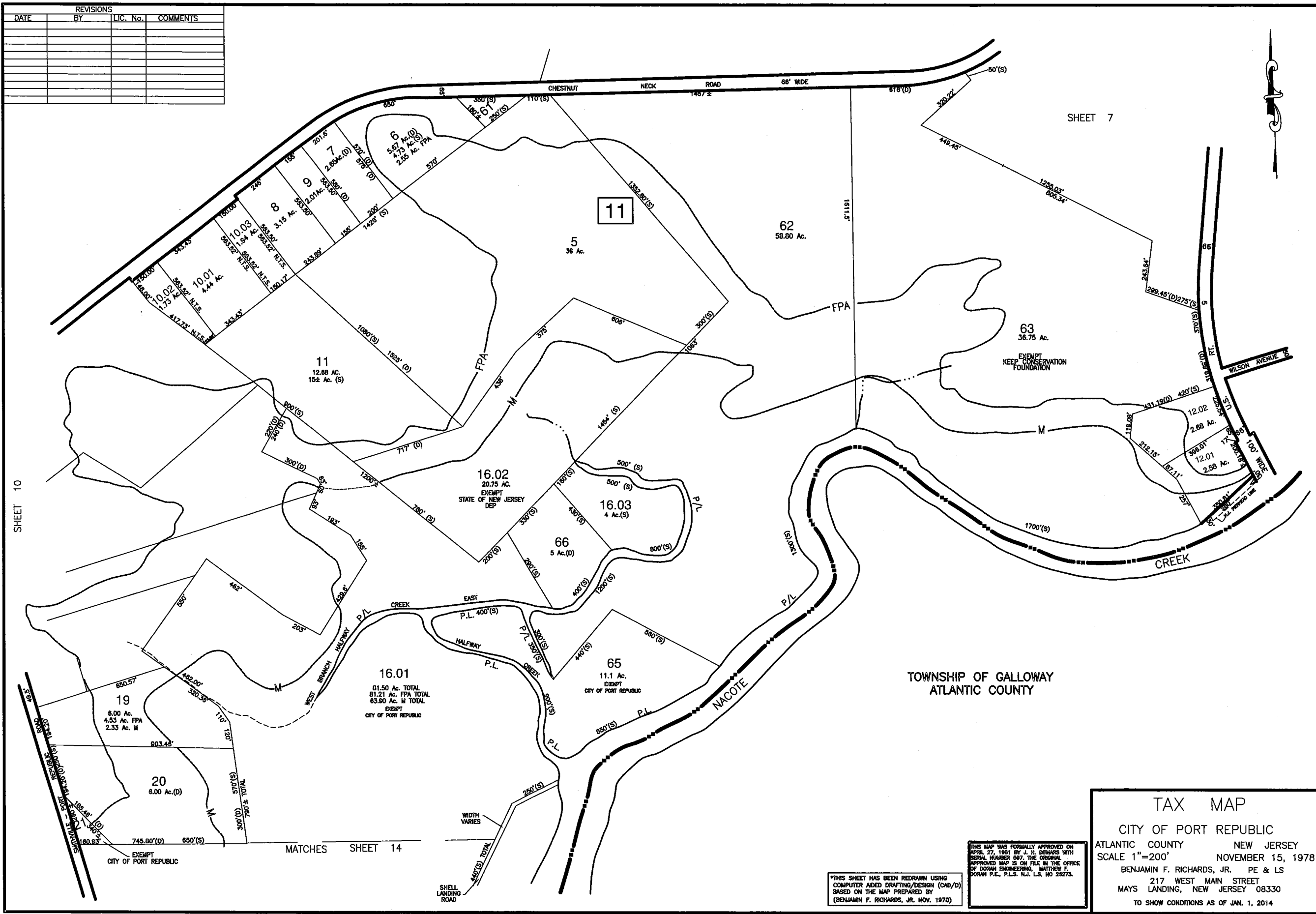
REVISIONS			
DATE	BY	LIC. No.	COMMENTS

THIS MAP WAS FORMALLY APPROVED ON
 APRIL 27, 1961 BY J. H. DITMERS WITH
 SERIAL NUMBER 697. THE ORIGINAL
 APPROVED MAP IS ON FILE IN THE OFFICE
 OF DORAH ENGINEERING, MATTHEW F.
 DORAH P.E., P.L.S. N.J. L.S. NO 28273.

*THIS SHEET HAS BEEN REDRAWN USING
 COMPUTER AIDED DRAFTING/DESIGN (CAD/D)
 BASED ON THE MAP PREPARED BY
 (BENJAMIN F. RICHARDS, JR. NOV. 1978)

TAX MAP
 CITY OF PORT REPUBLIC
 ATLANTIC COUNTY NEW JERSEY
 SCALE 1"=200' NOVEMBER 15, 1978
 BENJAMIN F. RICHARDS, JR. PE & LS
 217 WEST MAIN STREET
 MAYS LANDING, NEW JERSEY 08330
 TO SHOW CONDITIONS AS OF JAN. 1, 2014

REVISIONS			
DATE	BY	LIC. No.	COMMENTS



TAX MAP
 CITY OF PORT REPUBLIC
 ATLANTIC COUNTY NEW JERSEY
 SCALE 1"=200' NOVEMBER 15, 1978
 BENJAMIN F. RICHARDS, JR. PE & LS
 217 WEST MAIN STREET
 MAYS LANDING, NEW JERSEY 08330
 TO SHOW CONDITIONS AS OF JAN. 1, 2014

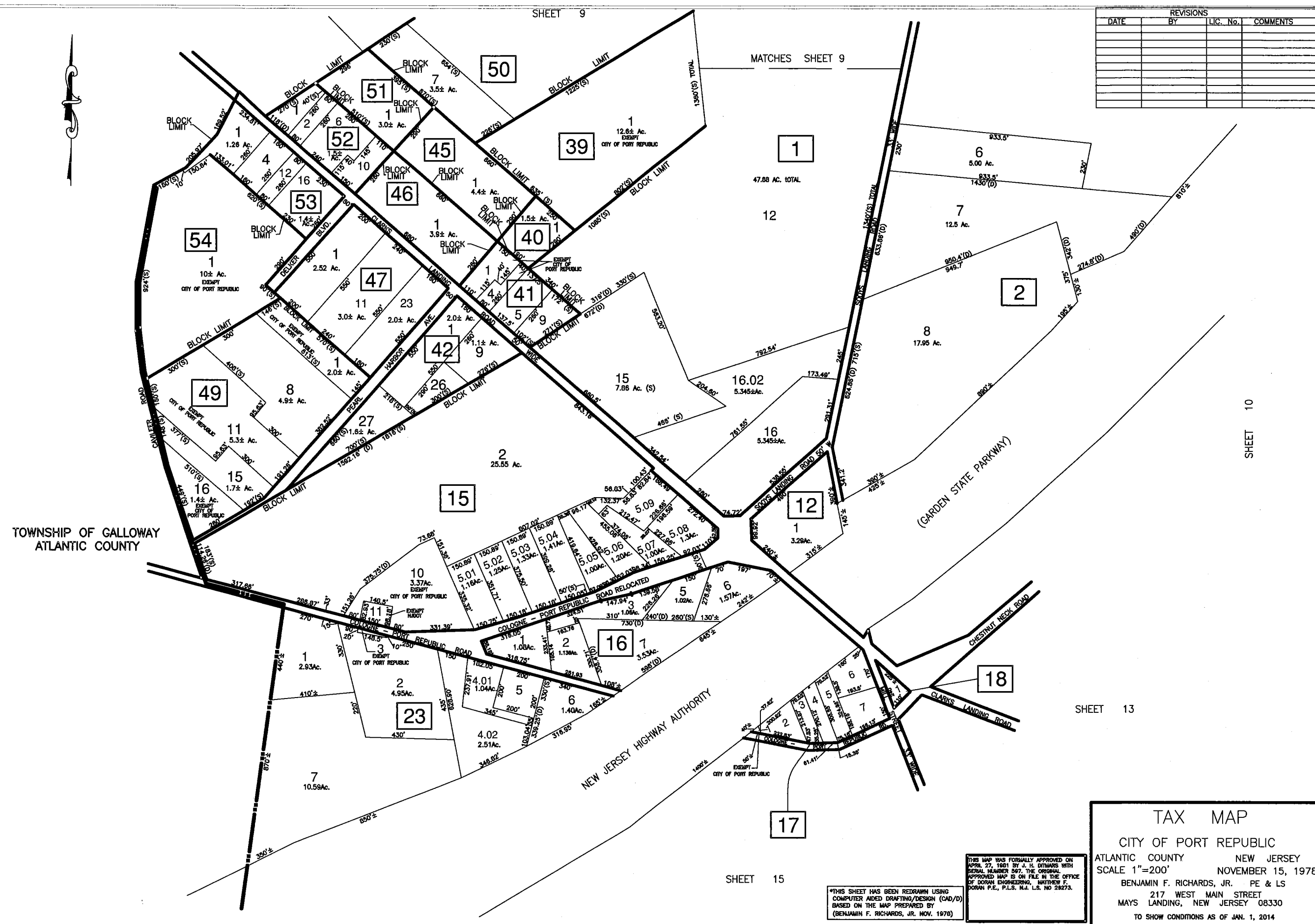
*THIS SHEET HAS BEEN REDRAWN USING
 COMPUTER AIDED DRAFTING/DESIGN (CAD/D)
 BASED ON THE MAP PREPARED BY
 (BENJAMIN F. RICHARDS, JR. NOV. 1978)

THIS MAP WAS FORMALLY APPROVED ON
 APRIL 27, 1991 BY J. H. DINAUS WITH
 SERIAL NUMBER 567. THE ORIGINAL
 APPROVED MAP IS ON FILE IN THE OFFICE
 OF DORAM ENGINEERING, MATTHEW F.
 DORAM P.E., P.L.S. N.J. L.S. NO 28273.

SHEET 10

MATCHES SHEET 14

REVISIONS			
DATE	BY	LIC. No.	COMMENTS



TOWNSHIP OF GALLOWAY
ATLANTIC COUNTY

SHEET 15

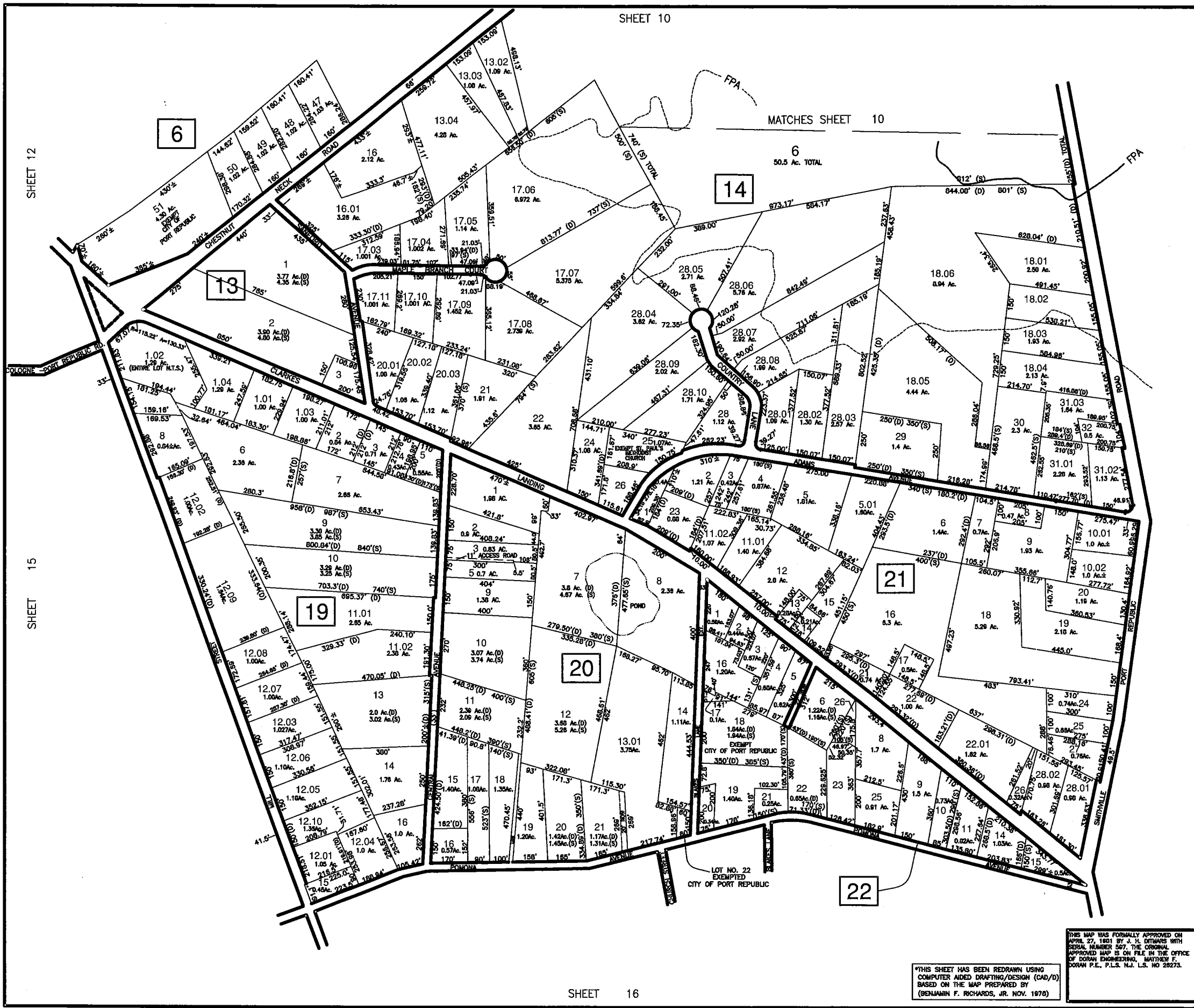
SHEET 13

SHEET 10

*THIS SHEET HAS BEEN REDRAWN USING
COMPUTER AIDED DRAFTING/DESIGN (CAD/D)
BASED ON THE MAP PREPARED BY
(BENJAMIN F. RICHARDS, JR. NOV. 1978)

THIS MAP WAS FORMALLY APPROVED ON
APRIL 27, 1981 BY J. H. DITMERS WITH
SERIAL NUMBER 067. THE ORIGINAL
APPROVED MAP IS ON FILE IN THE OFFICE
OF DONAH ENGINEERING, MATTHEW F.
DORAN P.E., P.L.S. N.J. L.S. NO 28273.

TAX MAP
CITY OF PORT REPUBLIC
ATLANTIC COUNTY NEW JERSEY
SCALE 1"=200' NOVEMBER 15, 1978
BENJAMIN F. RICHARDS, JR. PE & LS
217 WEST MAIN STREET
MAYS LANDING, NEW JERSEY 08330
TO SHOW CONDITIONS AS OF JAN. 1, 2014



REVISIONS			
DATE	BY	LIC. No.	COMMENTS

SHEET 10
MATCHES SHEET 10
6
50.5 AC. TOTAL
14
13
19
20
21
22
SHEET 11
SHEET 12
SHEET 15
SHEET 14
SHEET 16

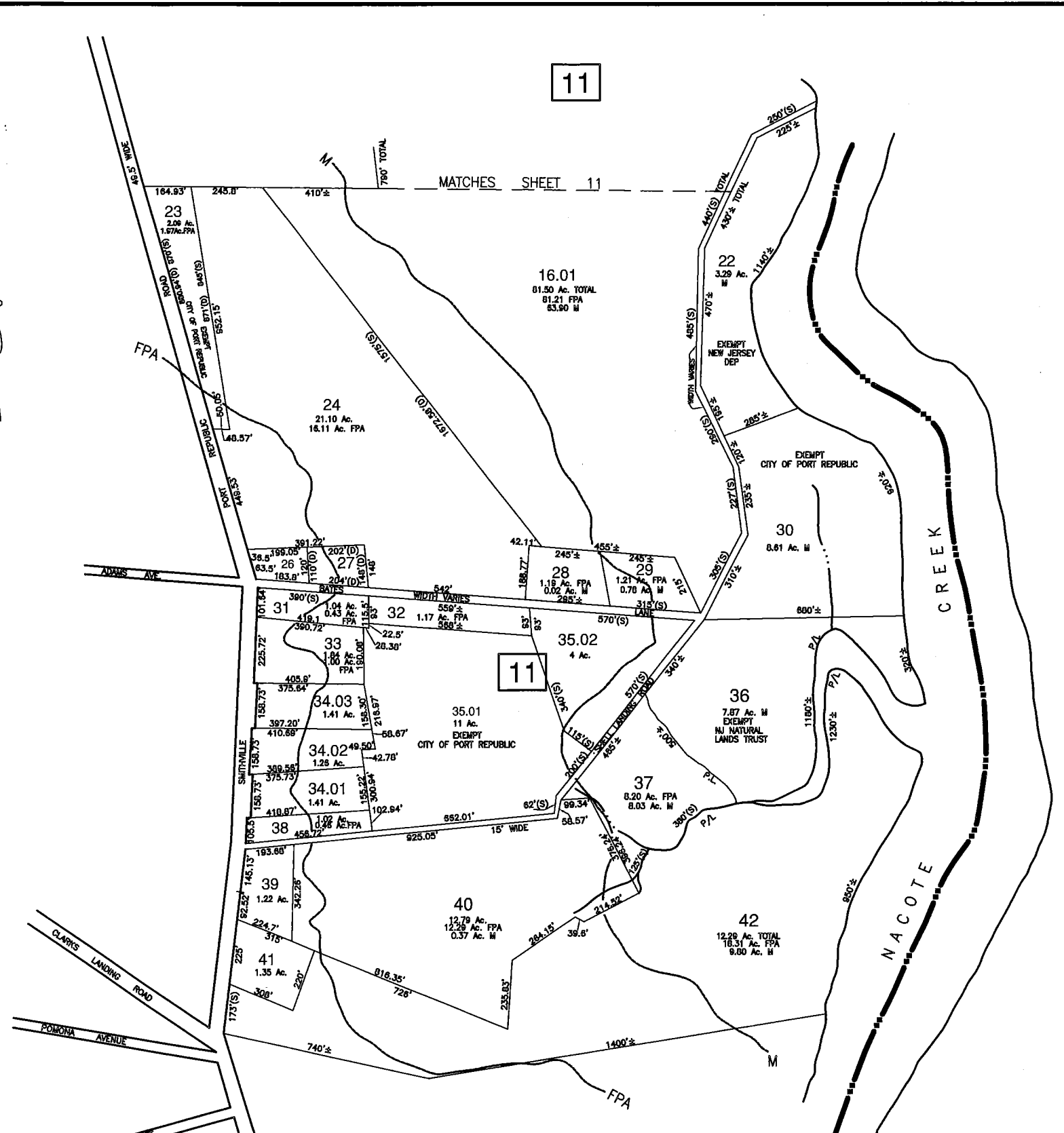
TAX MAP
CITY OF PORT REPUBLIC
ATLANTIC COUNTY NEW JERSEY
SCALE 1"=200' NOVEMBER 15, 1978
BENJAMIN F. RICHARDS, JR. PE & LS
217 WEST MAIN STREET
MAYS LANDING, NEW JERSEY 08330
TO SHOW CONDITIONS AS OF JAN. 1, 2014

THIS MAP WAS FORMALLY APPROVED ON APRIL 27, 1981 BY J. H. OTTAWAY WITH SERIAL NUMBER 567. THE ORIGINAL APPROVED MAP IS ON FILE IN THE OFFICE OF DORAN ENGINEERING, MATTHEW F. DORAN P.E., P.L.S. N.J. L.S. NO 28273.

THIS SHEET HAS BEEN REDRAWN USING COMPUTER AIDED DRAFTING/DESIGN (CAD/D) BASED ON THE MAP PREPARED BY (BENJAMIN F. RICHARDS, JR. NOV. 1978)

REVISIONS			
DATE	BY	LOC. No.	COMMENTS

SHEET 13



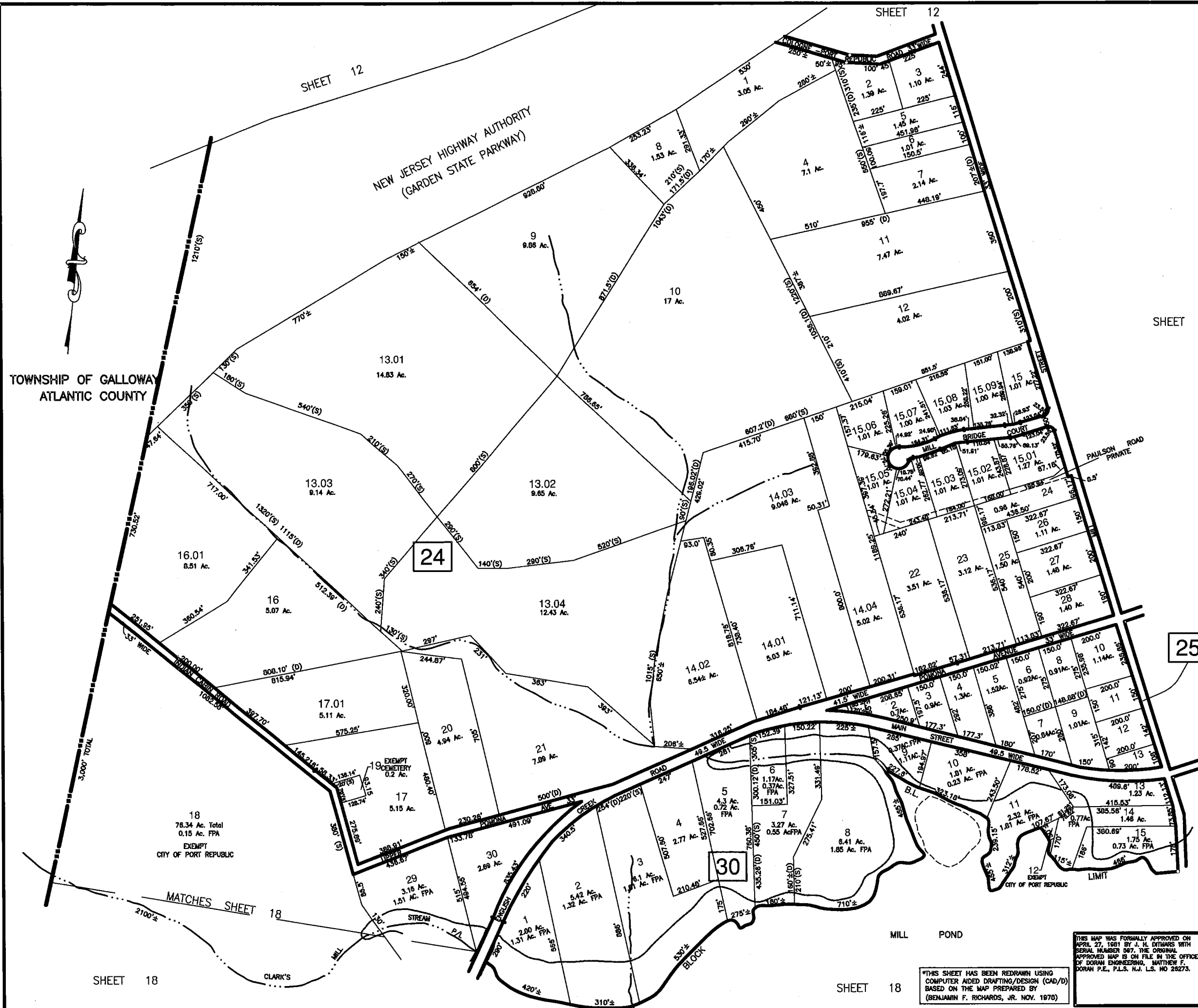
SHEET 17

TOWNSHIP OF GALLOWAY
ATLANTIC COUNTY

TAX MAP
 CITY OF PORT REPUBLIC
 ATLANTIC COUNTY NEW JERSEY
 SCALE 1"=200' NOVEMBER 15, 1978
 BENJAMIN F. RICHARDS, JR. PE & LS
 217 WEST MAIN STREET
 MAYS LANDING, NEW JERSEY 08330
 TO SHOW CONDITIONS AS OF JAN. 1, 2014

THIS MAP WAS FORMALLY APPROVED ON
 APRIL 27, 1981 BY J. H. DYMARS WITH
 SERIAL NUMBER 597. THE ORIGINAL
 APPROVED MAP IS ON FILE IN THE OFFICE
 OF DORAN ENGINEERING, MATTHEW F.
 DORAN P.E., P.L.S. N.J. L.S. NO 28273.

THIS SHEET HAS BEEN REDRAWN USING
 COMPUTER AIDED DRAFTING/DESIGN (CAD/D)
 BASED ON THE MAP PREPARED BY
 (BENJAMIN F. RICHARDS, JR. NOV. 1978)



REVISIONS			
DATE	BY	LIC. No.	COMMENTS

TAX MAP
 CITY OF PORT REPUBLIC
 ATLANTIC COUNTY NEW JERSEY
 SCALE 1"=200' NOVEMBER 15, 1978
 BENJAMIN F. RICHARDS, JR. PE & LS
 217 WEST MAIN STREET
 MAYS LANDING, NEW JERSEY 08330
 TO SHOW CONDITIONS AS OF JAN. 1, 2014

THIS MAP WAS FORMALLY APPROVED ON APRIL 27, 1981 BY J. H. O'NEALS WITH SERIAL NUMBER 567. THE ORIGINAL APPROVED MAP IS ON FILE IN THE OFFICE OF DORAN ENGINEERING, MATTHEW F. DORAN P.E., P.L.S. N.J. L.S. NO 28273.

THIS SHEET HAS BEEN REDRAWN USING COMPUTER AIDED DRAFTING/DESIGN (CAD/D) BASED ON THE MAP PREPARED BY (BENJAMIN F. RICHARDS, JR. NOV. 1970)

SHEET 18

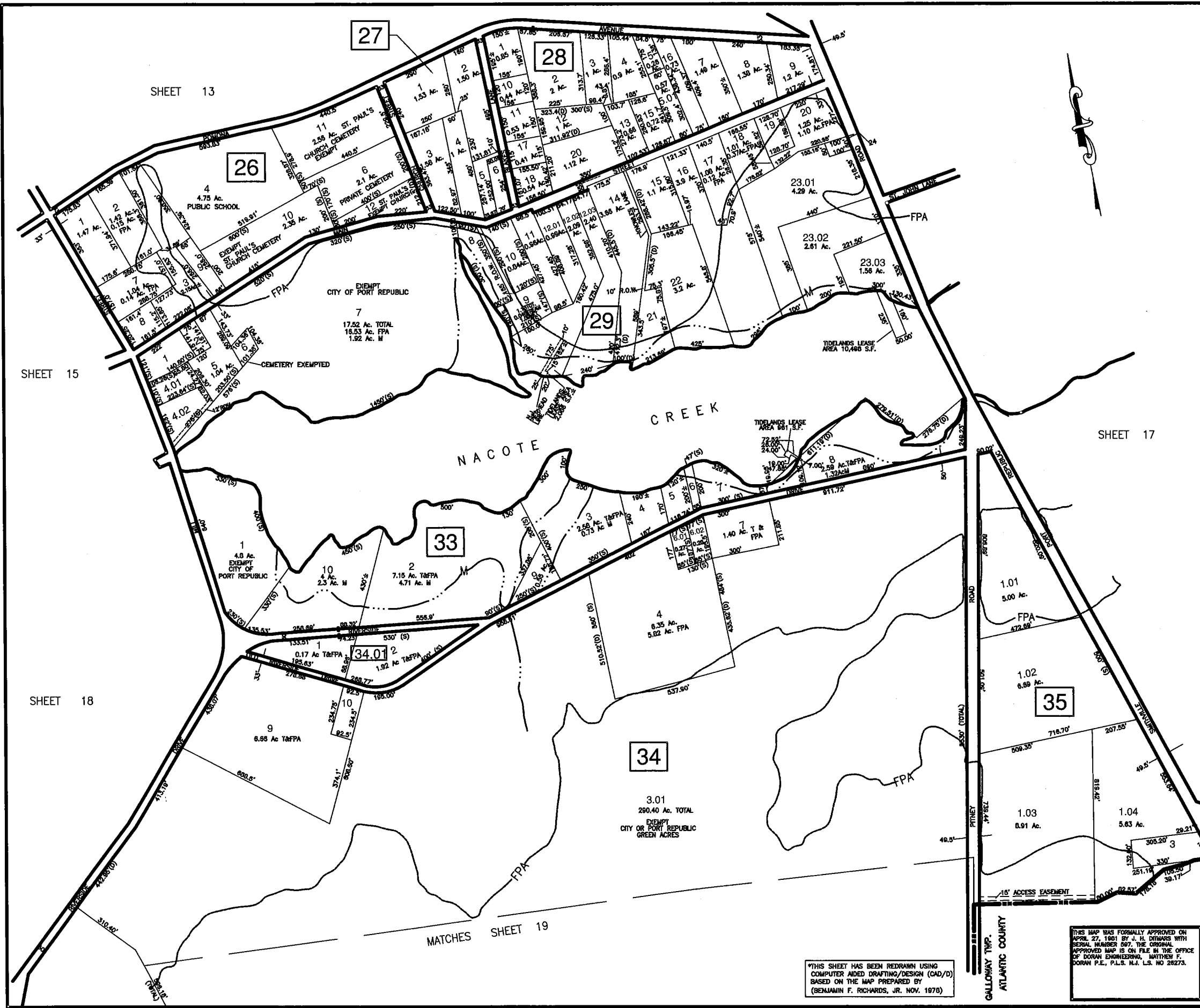
SHEET 18

SHEET 13

SHEET 12

SHEET 12

REVISIONS			
DATE	BY	LIC. No.	COMMENTS



SHEET 13

SHEET 15

SHEET 17

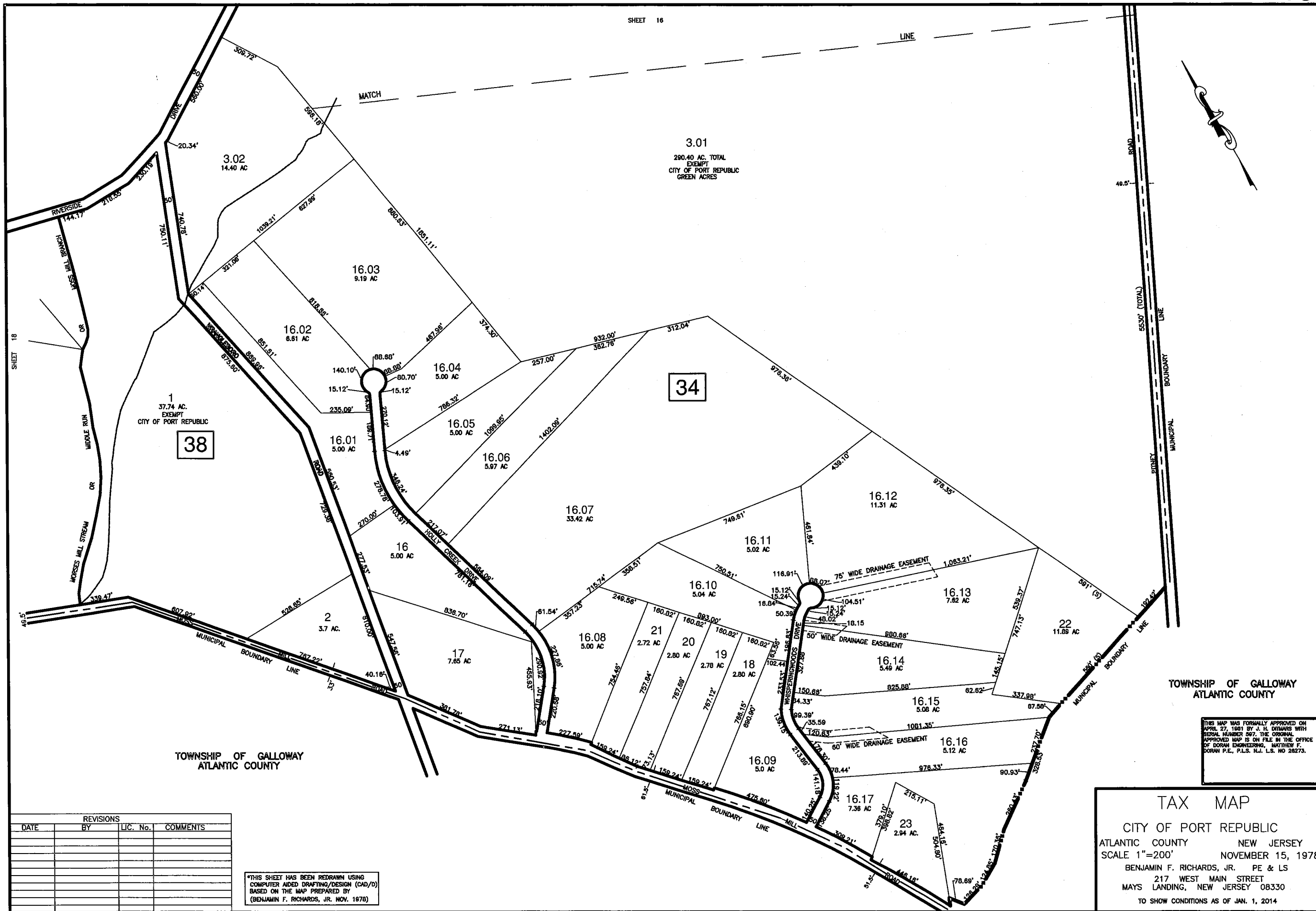
SHEET 18

MATCHES SHEET 19

*THIS SHEET HAS BEEN REDRAWN USING
COMPUTER AIDED DRAFTING/DESIGN (CAD/D)
BASED ON THE MAP PREPARED BY
(BENJAMIN F. RICHARDS, JR. NOV. 1976)

THIS MAP WAS FORMALLY APPROVED ON
APRIL 27, 1981 BY J. H. DUNBAR WITH
SERIAL NUMBER 597. THE ORIGINAL
APPROVED MAP IS ON FILE IN THE OFFICE
OF DORAN ENGINEERING, MATTHEW F.
DORAN P.E., P.L.S. N.J. L.S. NO 28273.

TAX MAP
CITY OF PORT REPUBLIC
ATLANTIC COUNTY NEW JERSEY
SCALE 1"=200' NOVEMBER 15, 1978
BENJAMIN F. RICHARDS, JR. PE & LS
217 WEST MAIN STREET
MAYS LANDING, NEW JERSEY 08330
TO SHOW CONDITIONS AS OF JAN. 1, 2014



1
37.74 AC.
EXEMPT
CITY OF PORT REPUBLIC
38

34

TOWNSHIP OF GALLOWAY
ATLANTIC COUNTY

TOWNSHIP OF GALLOWAY
ATLANTIC COUNTY

THIS MAP WAS FORMALLY APPROVED ON
APRIL 27, 1981 BY J. M. DUNN WITH
SERIAL NUMBER 867. THE ORIGINAL
APPROVED MAP IS ON FILE IN THE OFFICE
OF DORAN ENGINEERING, MATTHEW F.
DORAN P.E., P.L.S. N.J. L.S. NO 28273.

TAX MAP
CITY OF PORT REPUBLIC
ATLANTIC COUNTY NEW JERSEY
SCALE 1"=200' NOVEMBER 15, 1978
BENJAMIN F. RICHARDS, JR. PE & LS
217 WEST MAIN STREET
MAYS LANDING, NEW JERSEY 08330
TO SHOW CONDITIONS AS OF JAN. 1, 2014

REVISIONS			
DATE	BY	LIC. No.	COMMENTS

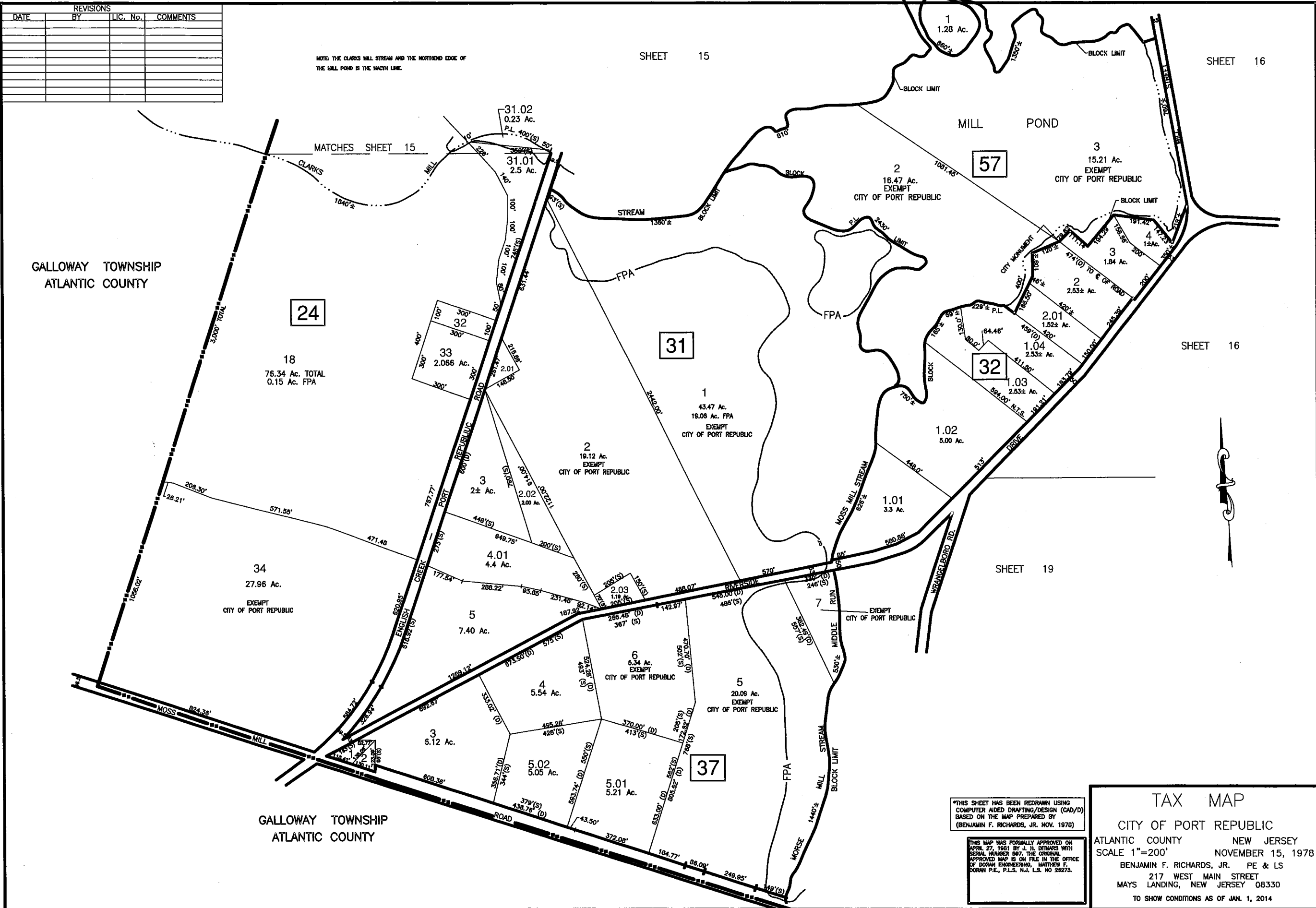
*THIS SHEET HAS BEEN REDRAWN USING
COMPUTER AIDED DRAFTING/DESIGN (CAD/D)
BASED ON THE MAP PREPARED BY
(BENJAMIN F. RICHARDS, JR. NOV. 1978)

REVISIONS			
DATE	BY	LIC. No.	COMMENTS

NOTE: THE CLARKS MILL STREAM AND THE NORTHERN EDGE OF THE MILL POND IS THE MATCH LINE.

SHEET 15

SHEET 16



THIS SHEET HAS BEEN REDRAWN USING COMPUTER AIDED DRAFTING/DESIGN (CAD/D) BASED ON THE MAP PREPARED BY (BENJAMIN F. RICHARDS, JR. NOV. 1978)

THIS MAP WAS FORMALLY APPROVED ON APRIL 27, 1981 BY J. H. DIMARCO WITH SERIAL NUMBER 087. THE ORIGINAL APPROVED MAP IS ON FILE IN THE OFFICE OF DORAH ENGINEERING, MATTHEW F. DORAH P.E., P.L.S. N.J. L.S. NO 28273.

TAX MAP
 CITY OF PORT REPUBLIC
 ATLANTIC COUNTY NEW JERSEY
 SCALE 1"=200' NOVEMBER 15, 1978
 BENJAMIN F. RICHARDS, JR. PE & LS
 217 WEST MAIN STREET
 MAYS LANDING, NEW JERSEY 08330
 TO SHOW CONDITIONS AS OF JAN. 1, 2014