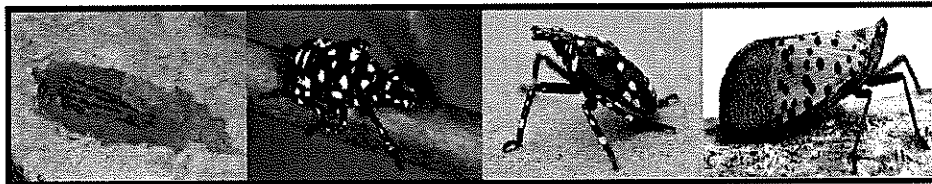
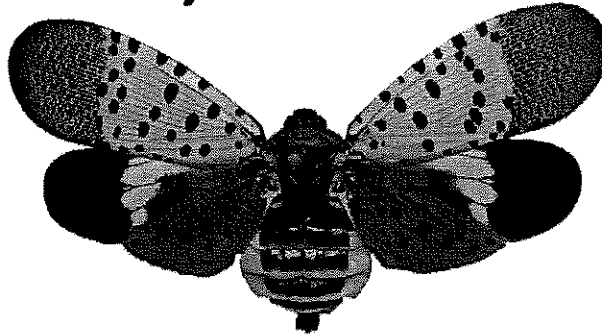


SEE IT, REPORT IT!



Spotted Lanternfly

What to do:

If you see egg masses, scrape them off, double bag and throw away.
You can also place the eggs into alcohol, bleach or hand sanitizer to kill them.

Collect a specimen:

Specimens of any life stage can be turned in to the New Jersey Department of Agriculture's lab for verification.

Take a picture:

With your GPS function turned on your smartphone or a camera with GPS,
take a photograph of ANY life stage (including egg masses)

Submit picture to: SLF-plantindustry@ag.nj.gov

Report a site:

If you can't take a specimen or photograph, call and leave detailing your
sighting and contact information

NJ Spotted Lanternfly Hotline at 1-833-223-2840 (BADBUG0)

