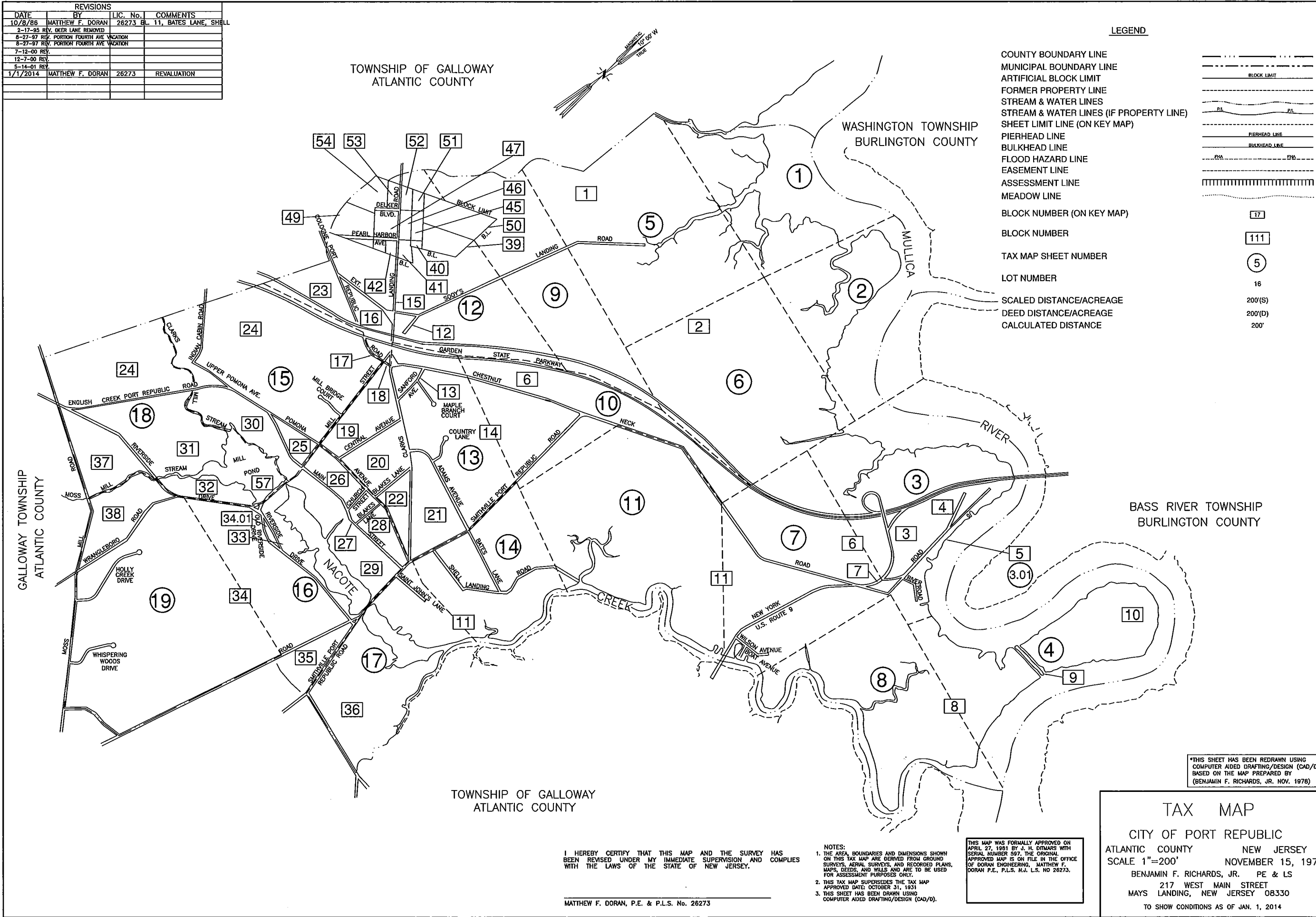
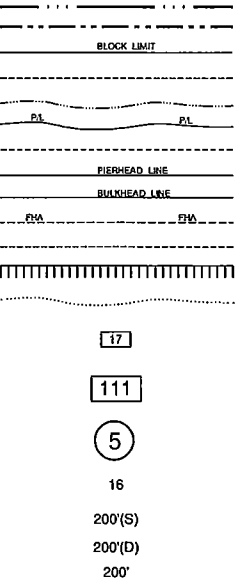


REVISIONS			
DATE	BY	LIC. No.	COMMENTS
10/8/86	MATTHEW F. DORAN	26273	BL. 11, BATES LANE, SHELL
2-17-95	REV. DEER LANE REMOVED		
8-27-97	REV. PORTION FOURTH AVE VACATION		
8-27-97	REV. PORTION FOURTH AVE VACATION		
7-12-00	REV.		
12-7-00	REV.		
5-14-01	REV.		
1/1/2014	MATTHEW F. DORAN	26273	REVALUATION



LEGEND

- COUNTY BOUNDARY LINE
- MUNICIPAL BOUNDARY LINE
- ARTIFICIAL BLOCK LIMIT
- FORMER PROPERTY LINE
- STREAM & WATER LINES
- STREAM & WATER LINES (IF PROPERTY LINE)
- SHEET LIMIT LINE (ON KEY MAP)
- PIERHEAD LINE
- BULKHEAD LINE
- FLOOD HAZARD LINE
- EASEMENT LINE
- ASSESSMENT LINE
- MEADOW LINE
- BLOCK NUMBER (ON KEY MAP)
- BLOCK NUMBER
- TAX MAP SHEET NUMBER
- LOT NUMBER
- SCALED DISTANCE/ACREAGE
- DEED DISTANCE/ACREAGE
- CALCULATED DISTANCE



*THIS SHEET HAS BEEN REDRAWN USING
COMPUTER AIDED DRAFTING/DESIGN (CAD/D)
BASED ON THE MAP PREPARED BY
(BENJAMIN F. RICHARDS, JR. NOV. 1978)

TAX MAP
CITY OF PORT REPUBLIC
ATLANTIC COUNTY NEW JERSEY
SCALE 1"=200' NOVEMBER 15, 1978
BENJAMIN F. RICHARDS, JR. PE & LS
217 WEST MAIN STREET
MAYS LANDING, NEW JERSEY 08330
TO SHOW CONDITIONS AS OF JAN. 1, 2014

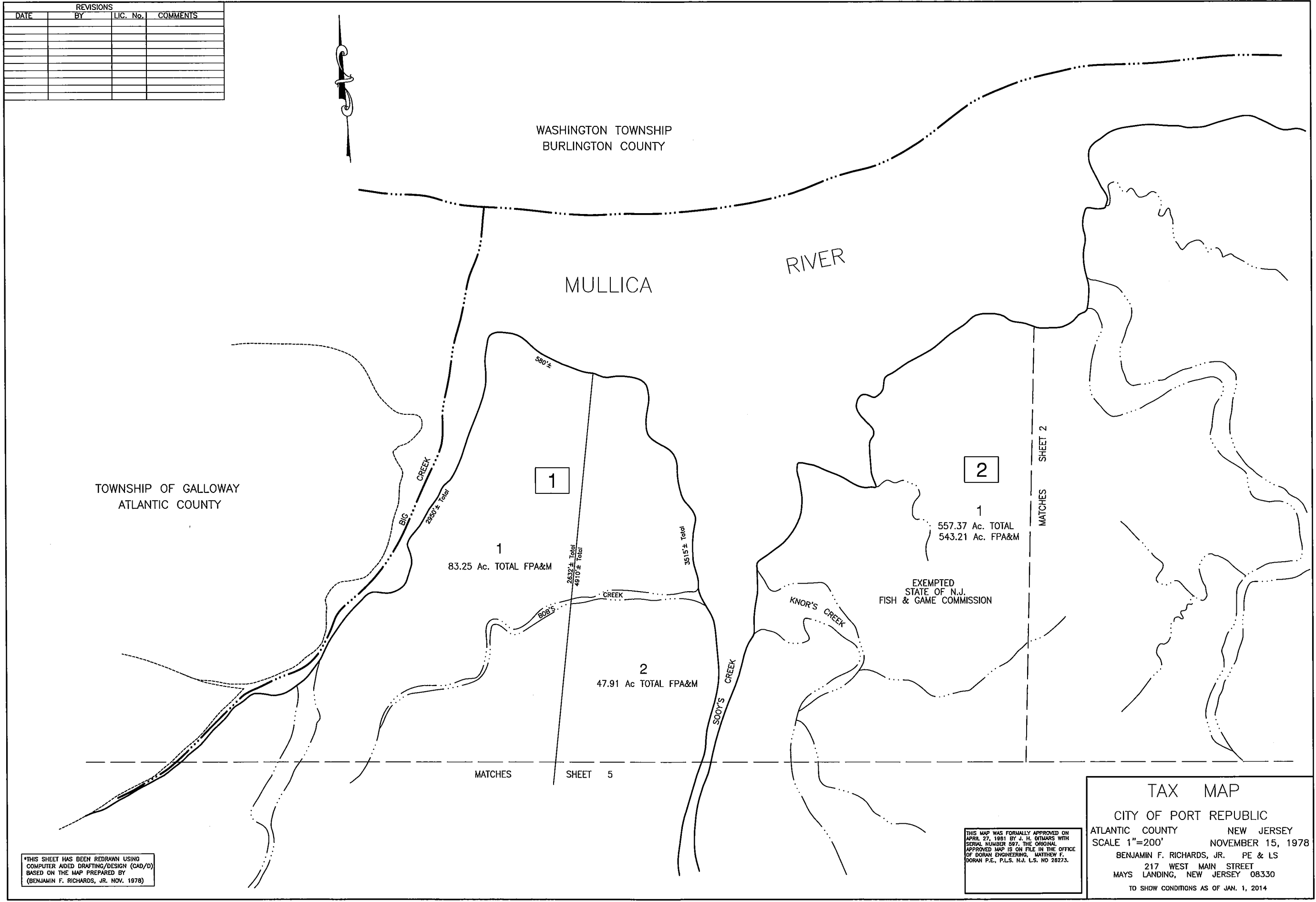
I HEREBY CERTIFY THAT THIS MAP AND THE SURVEY HAS
BEEN REVISED UNDER MY IMMEDIATE SUPERVISION AND COMPLIES
WITH THE LAWS OF THE STATE OF NEW JERSEY.

MATTHEW F. DORAN, P.E. & P.L.S. No. 26273

- NOTES:
1. THE AREA, BOUNDARIES AND DIMENSIONS SHOWN ON THIS TAX MAP ARE DERIVED FROM GROUND SURVEYS, AERIAL SURVEYS, AND RECORDED PLANS, MAPS, DEEDS, AND YELLS AND ARE TO BE USED FOR ASSESSMENT PURPOSES ONLY.
 2. THIS TAX MAP SUPERSEDES THE TAX MAP APPROVED DATE: OCTOBER 31, 1931
 3. THIS SHEET HAS BEEN DRAWN USING COMPUTER AIDED DRAFTING/DESIGN (CAD/D).

THIS MAP WAS FORMALLY APPROVED ON
APRIL 27, 1981 BY J. H. DITMARS WITH
SERIAL NUMBER 597. THE ORIGINAL
APPROVED MAP IS ON FILE IN THE OFFICE
OF DORAN ENGINEERING, MATTHEW F.
DORAN P.E., P.L.S. N.J. L.S. NO 26273.

REVISIONS			
DATE	BY	LIC. No.	COMMENTS



*THIS SHEET HAS BEEN REDRAWN USING
COMPUTER AIDED DRAFTING/DESIGN (CAD/D)
BASED ON THE MAP PREPARED BY
(BENJAMIN F. RICHARDS, JR. NOV. 1978)

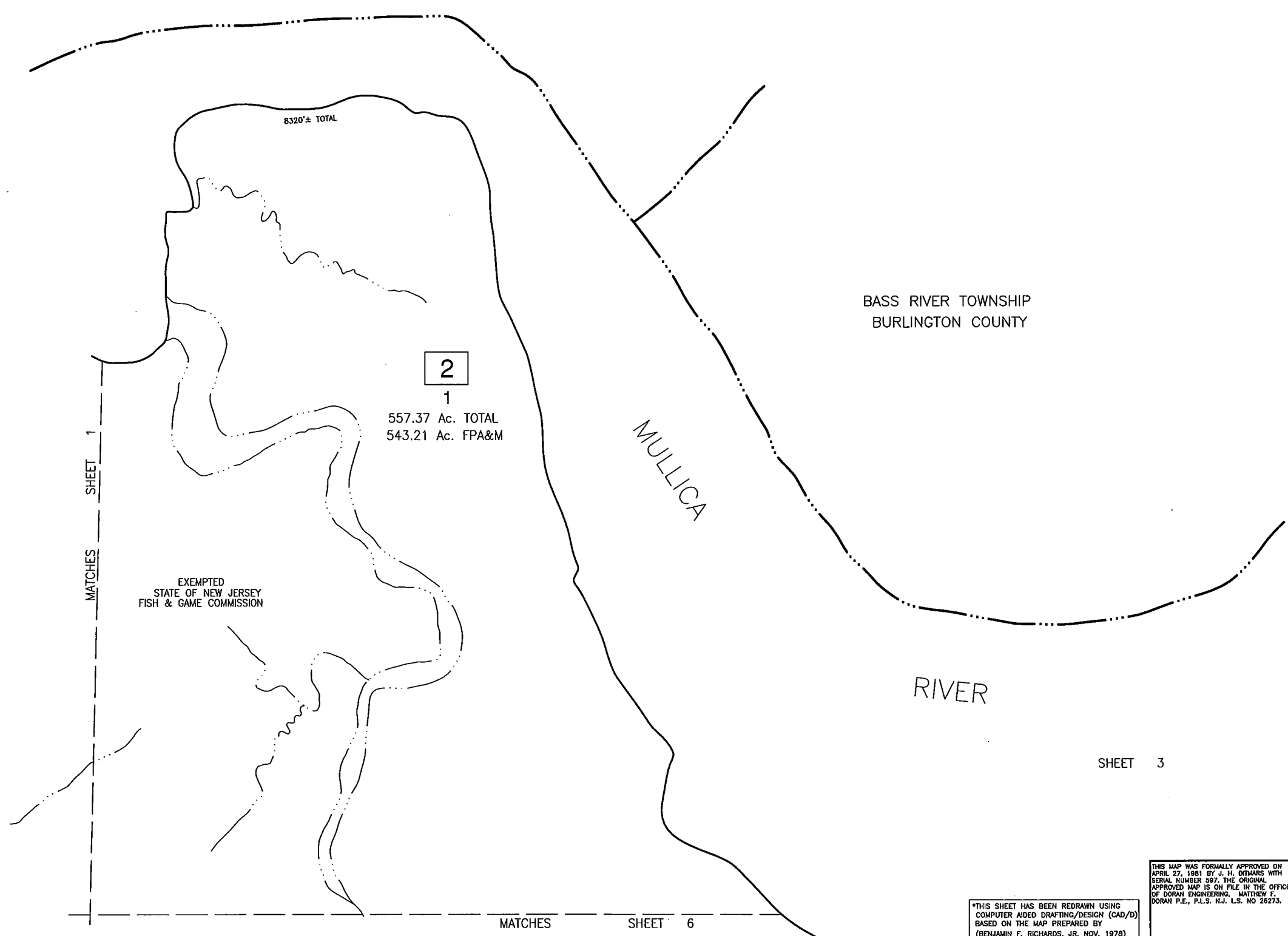
THIS MAP WAS FORMALLY APPROVED ON
APRIL 27, 1981 BY J. H. O'DWYER WITH
SERIAL NUMBER 587. THE ORIGINAL
APPROVED MAP IS ON FILE IN THE OFFICE
OF DORAN ENGINEERING, MATTHEW F.
DORAN P.E., P.L.S. N.J. L.S. NO 28273.

TAX MAP
CITY OF PORT REPUBLIC
ATLANTIC COUNTY NEW JERSEY
SCALE 1"=200' NOVEMBER 15, 1978
BENJAMIN F. RICHARDS, JR. PE & LS
217 WEST MAIN STREET
MAYS LANDING, NEW JERSEY 08330
TO SHOW CONDITIONS AS OF JAN. 1, 2014

REVISIONS			
DATE	BY	LIC. No.	COMMENTS

WASHINGTON TOWNSHIP
BURLINGTON COUNTY

BASS RIVER TOWNSHIP
BURLINGTON COUNTY



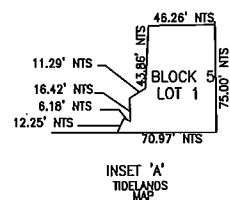
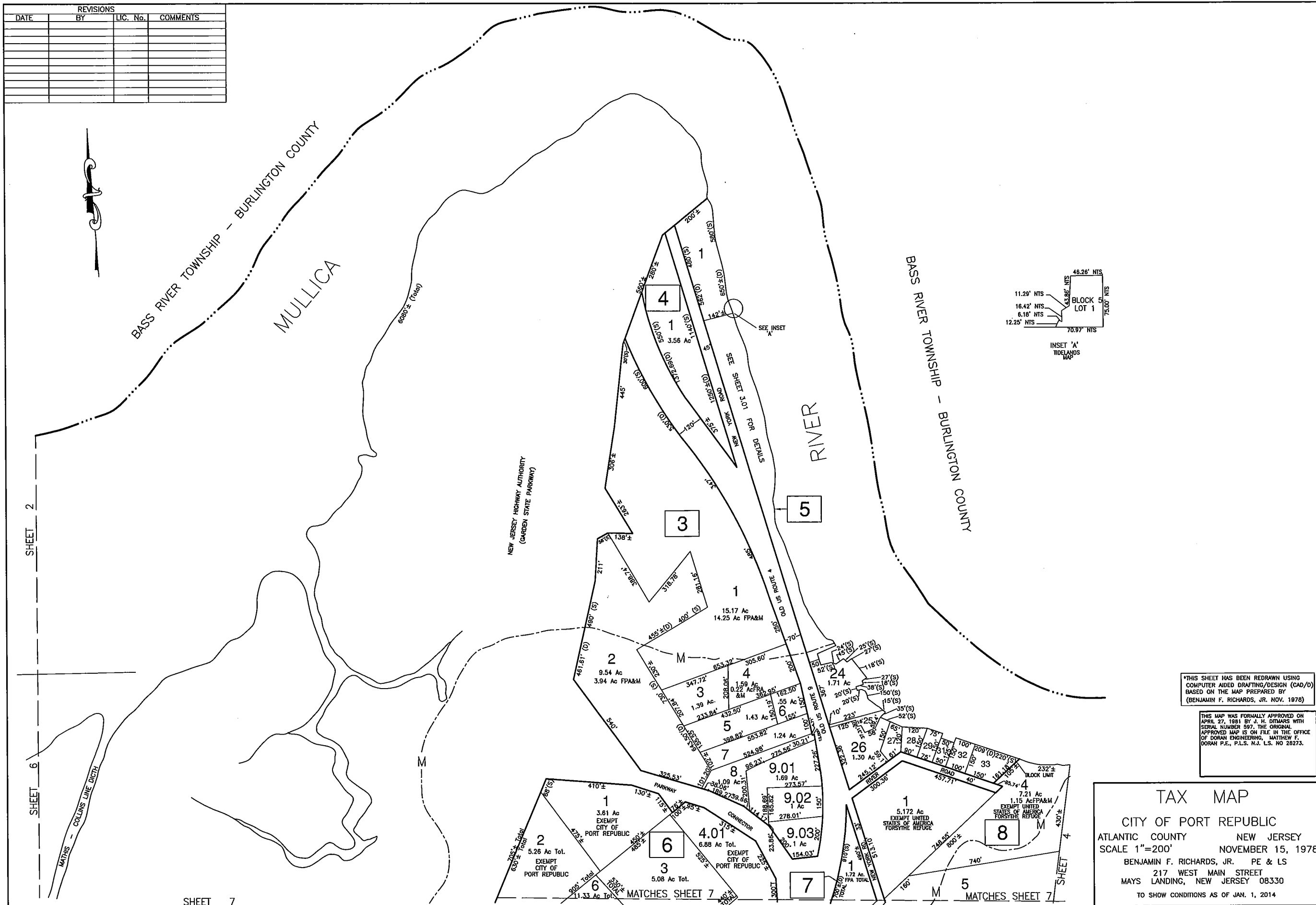
SHEET 3

*THIS SHEET HAS BEEN REDRAWN USING
COMPUTER AIDED DRAFTING/DESIGN (CAD/D)
BASED ON THE MAP PREPARED BY
(BENJAMIN F. RICHARDS, JR. NOV. 1978)

THIS MAP WAS FORMALLY APPROVED ON
APRIL 27, 1981 BY J. H. O'DAIRS WITH
SERIAL NUMBER 597. THE ORIGINAL
APPROVED MAP IS ON FILE IN THE OFFICE
OF DORAN ENGINEERING, MATTHEW F.
DORAN P.E., P.L.S. N.J. L.S. NO 28273.

TAX MAP
CITY OF PORT REPUBLIC
ATLANTIC COUNTY NEW JERSEY
SCALE 1"=200' NOVEMBER 15, 1978
BENJAMIN F. RICHARDS, JR. PE & LS
217 WEST MAIN STREET
MAYS LANDING, NEW JERSEY 08330
TO SHOW CONDITIONS AS OF JAN. 1, 2014

REVISIONS			
DATE	BY	LIC. No.	COMMENTS



*THIS SHEET HAS BEEN REDRAWN USING
COMPUTER AIDED DRAFTING/DESIGN (CAD/D)
BASED ON THE MAP PREPARED BY
(BENJAMIN F. RICHARDS, JR. NOV. 1978)

THIS MAP WAS FORMALLY APPROVED ON
APRIL 27, 1981 BY J. H. DIMARS WITH
SERIAL NUMBER 597. THE ORIGINAL
APPROVED MAP IS ON FILE IN THE OFFICE
OF DORAN ENGINEERING, MATTHEW F.
DORAN P.E., P.L.S. N.J. L.S. NO 28273.

TAX MAP

CITY OF PORT REPUBLIC

ATLANTIC COUNTY NEW JERSEY

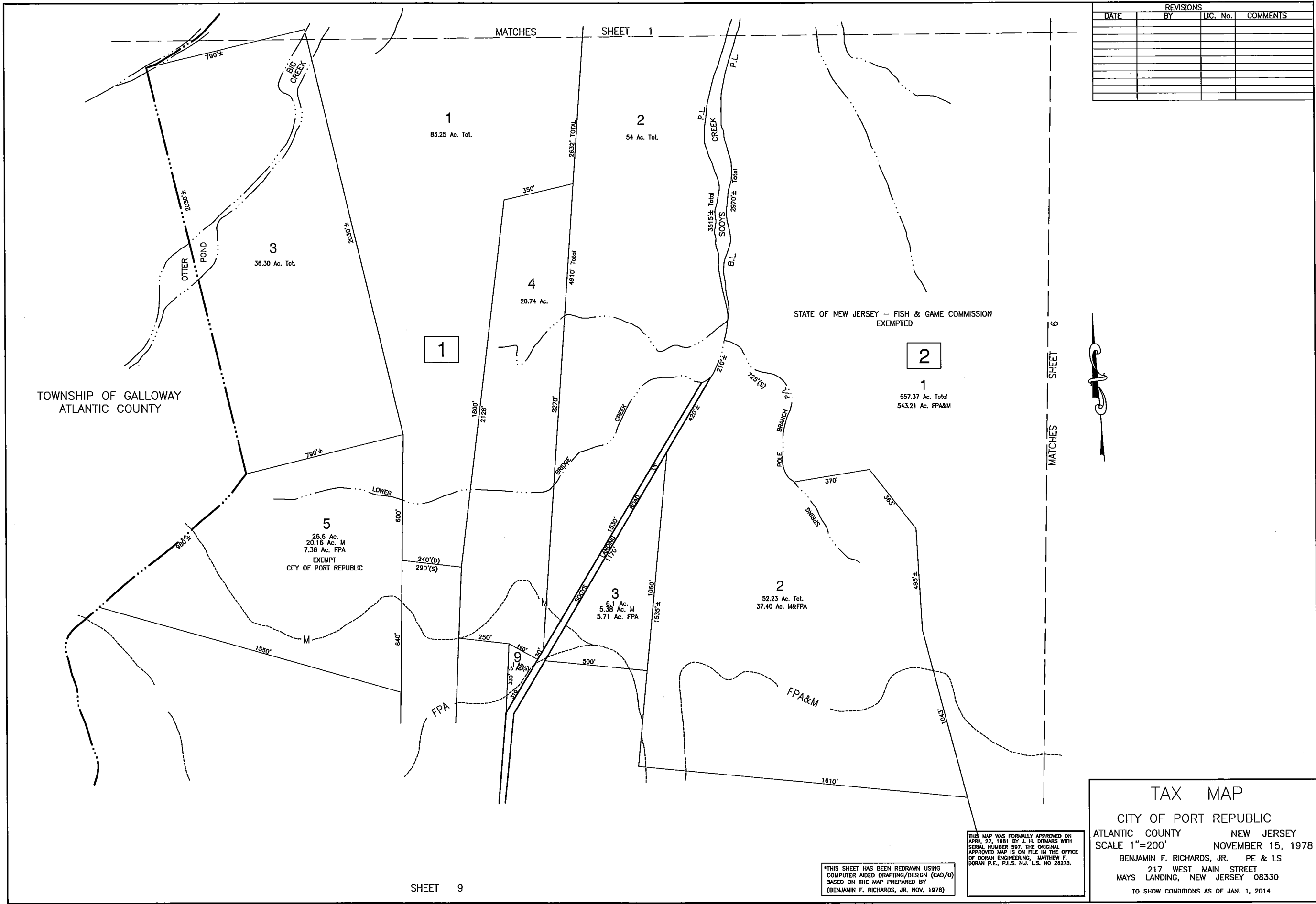
SCALE 1"=200' NOVEMBER 15, 1978

BENJAMIN F. RICHARDS, JR. PE & LS

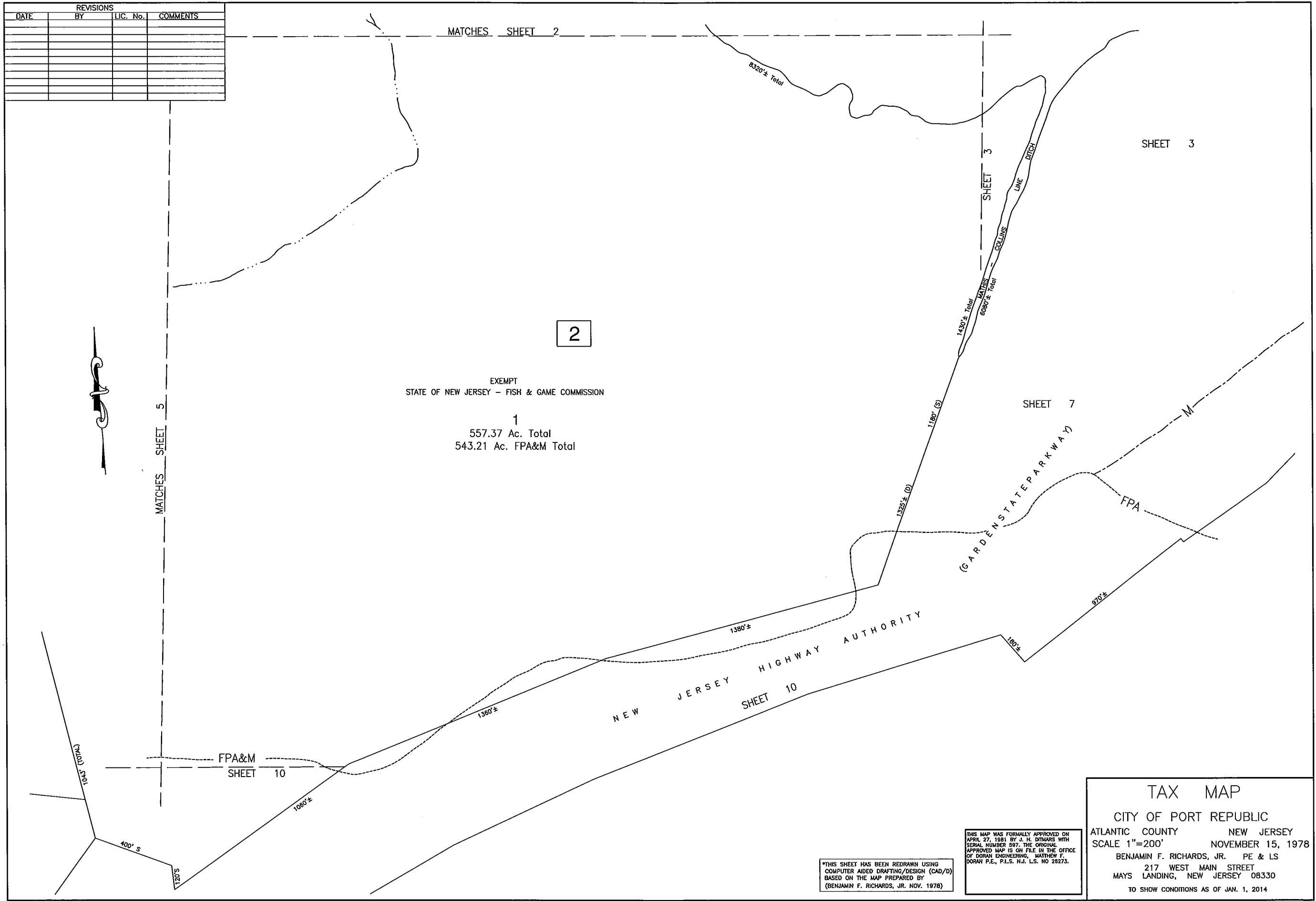
217 WEST MAIN STREET

MAYS LANDING, NEW JERSEY 08330

TO SHOW CONDITIONS AS OF JAN. 1, 2014



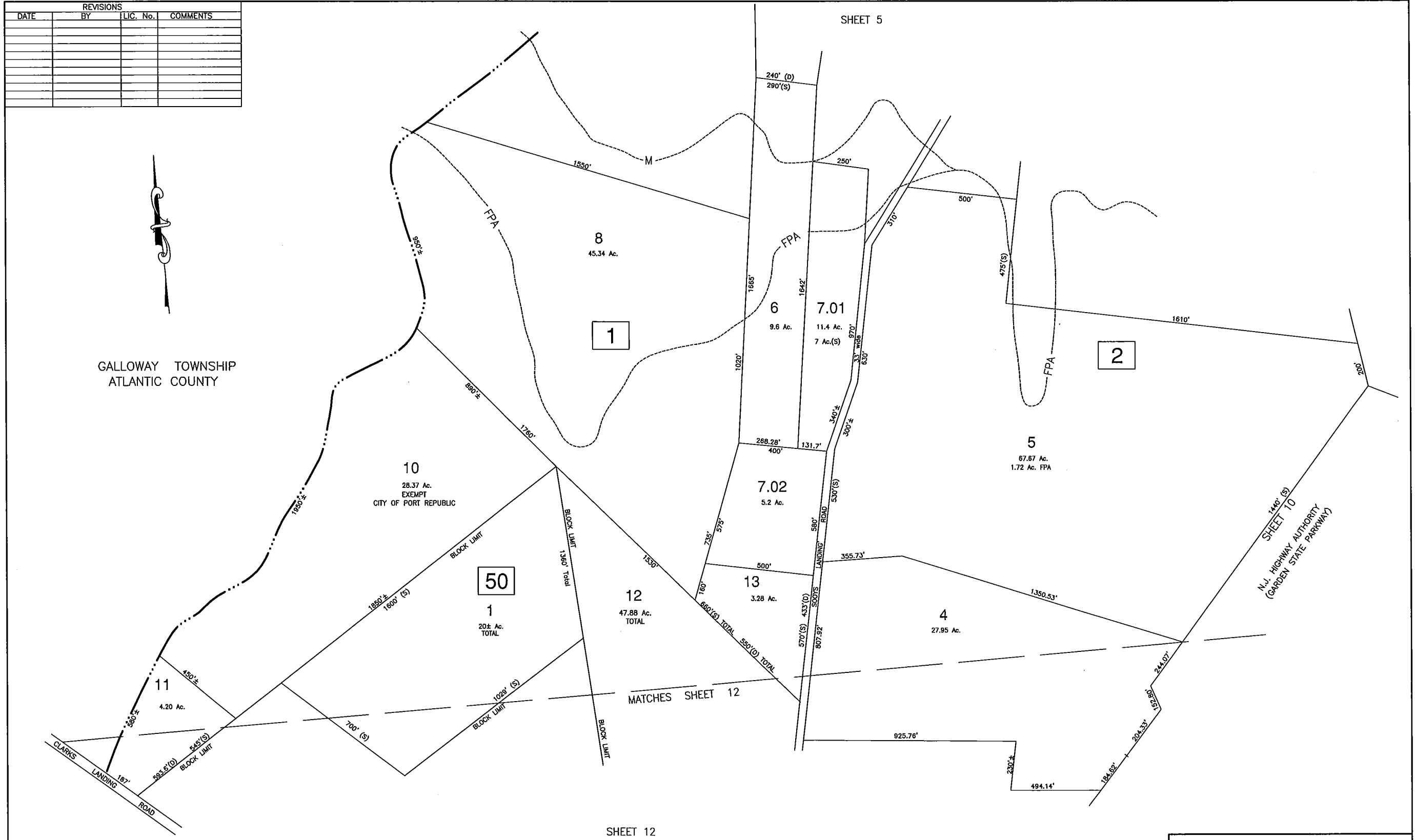
REVISIONS			
DATE	BY	LIC. No.	COMMENTS



REVISIONS			
DATE	BY	LIC. No.	COMMENTS



GALLOWAY TOWNSHIP
ATLANTIC COUNTY



*THIS SHEET HAS BEEN REDRAWN USING
COMPUTER AIDED DRAFTING/DESIGN (CAD/D)
BASED ON THE MAP PREPARED BY
(BENJAMIN F. RICHARDS, JR. NOV. 1978)

THIS MAP WAS FORMALLY APPROVED ON
APRIL 27, 1981 BY J. H. O'DANIELS WITH
SERIAL NUMBER 597. THE ORIGINAL
APPROVED MAP IS ON FILE IN THE OFFICE
OF DORAN ENGINEERING, MATTHEW F.
DORAN P.E., P.L.S. N.J. NO. 28273.

TAX MAP

CITY OF PORT REPUBLIC

ATLANTIC COUNTY NEW JERSEY

SCALE 1"=200' NOVEMBER 15, 1978

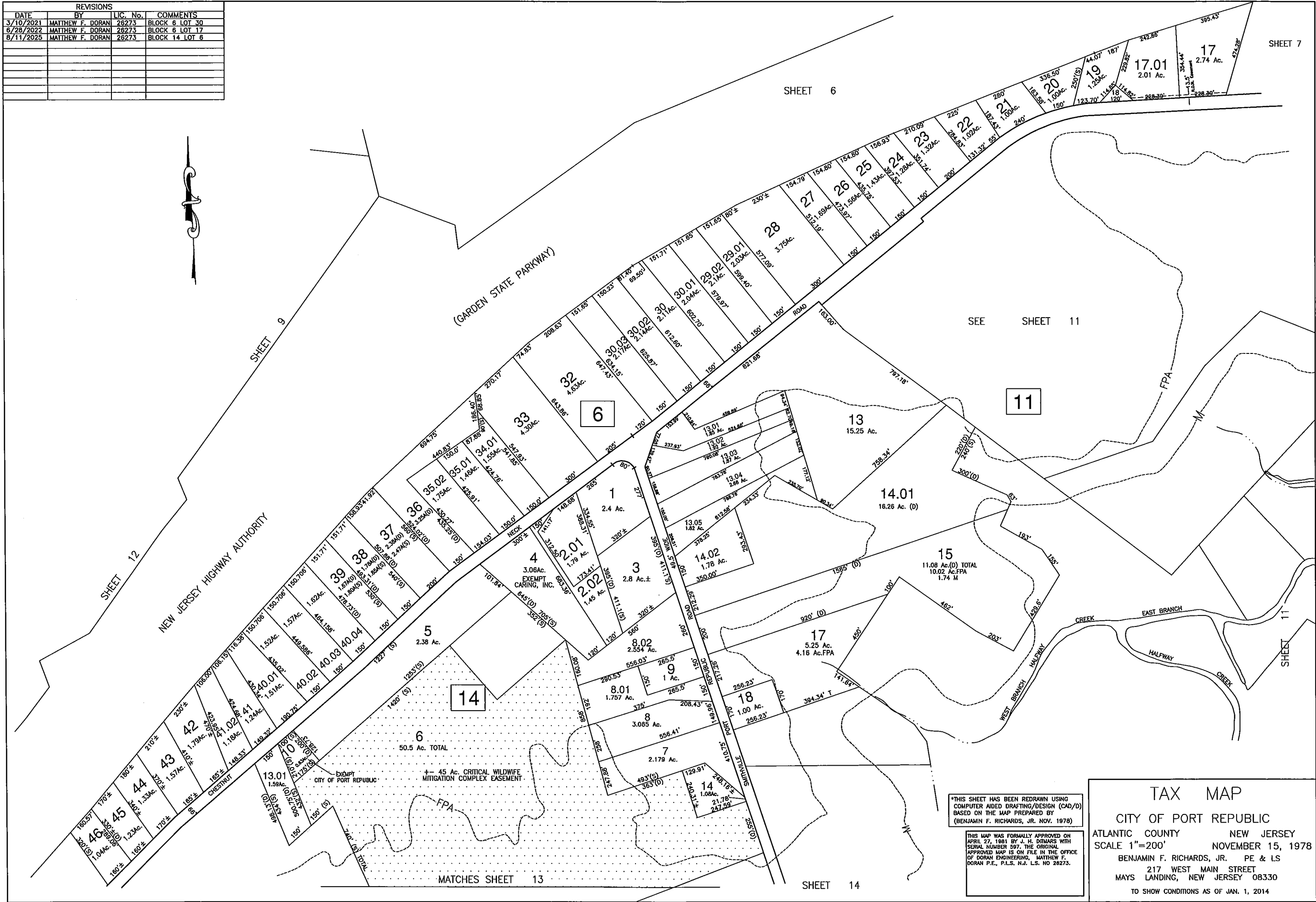
BENJAMIN F. RICHARDS, JR. PE & LS

217 WEST MAIN STREET

MAYS LANDING, NEW JERSEY 08330

TO SHOW CONDITIONS AS OF JAN. 1, 2014

REVISIONS			
DATE	BY	LIC. No.	COMMENTS
3/10/2021	MATTHEW F. DORAN	26273	BLOCK 6 LOT 30
6/28/2022	MATTHEW F. DORAN	26273	BLOCK 6 LOT 17
8/11/2025	MATTHEW F. DORAN	26273	BLOCK 14 LOT 6



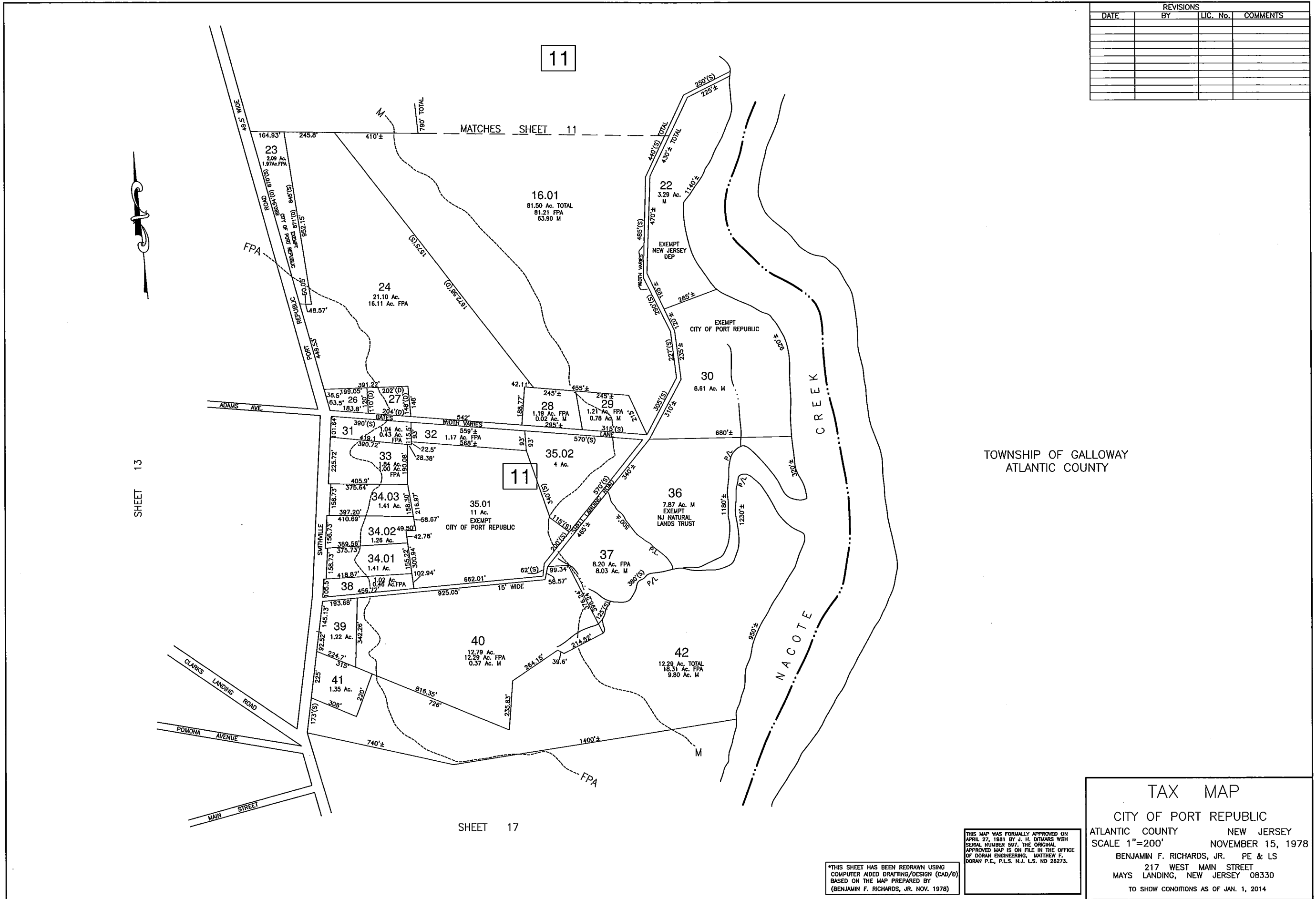
*THIS SHEET HAS BEEN REDRAWN USING
COMPUTER AIDED DRAFTING/DESIGN (CAD/D)
BASED ON THE MAP PREPARED BY
(BENJAMIN F. RICHARDS, JR. NOV. 1978)

THIS MAP WAS FORMALLY APPROVED ON
APRIL 27, 1981 BY J. H. DINIARD WITH
SERIAL NUMBER 597. THE ORIGINAL
APPROVED MAP IS ON FILE IN THE OFFICE
OF DORAN ENGINEERING, MATTHEW F.
DORAN P.E., P.L.S. N.J. L.S. NO. 26273.

TAX MAP
CITY OF PORT REPUBLIC
ATLANTIC COUNTY NEW JERSEY
SCALE 1"=200' NOVEMBER 15, 1978
BENJAMIN F. RICHARDS, JR. PE & LS
217 WEST MAIN STREET
MAYS LANDING, NEW JERSEY 08330
TO SHOW CONDITIONS AS OF JAN. 1, 2014







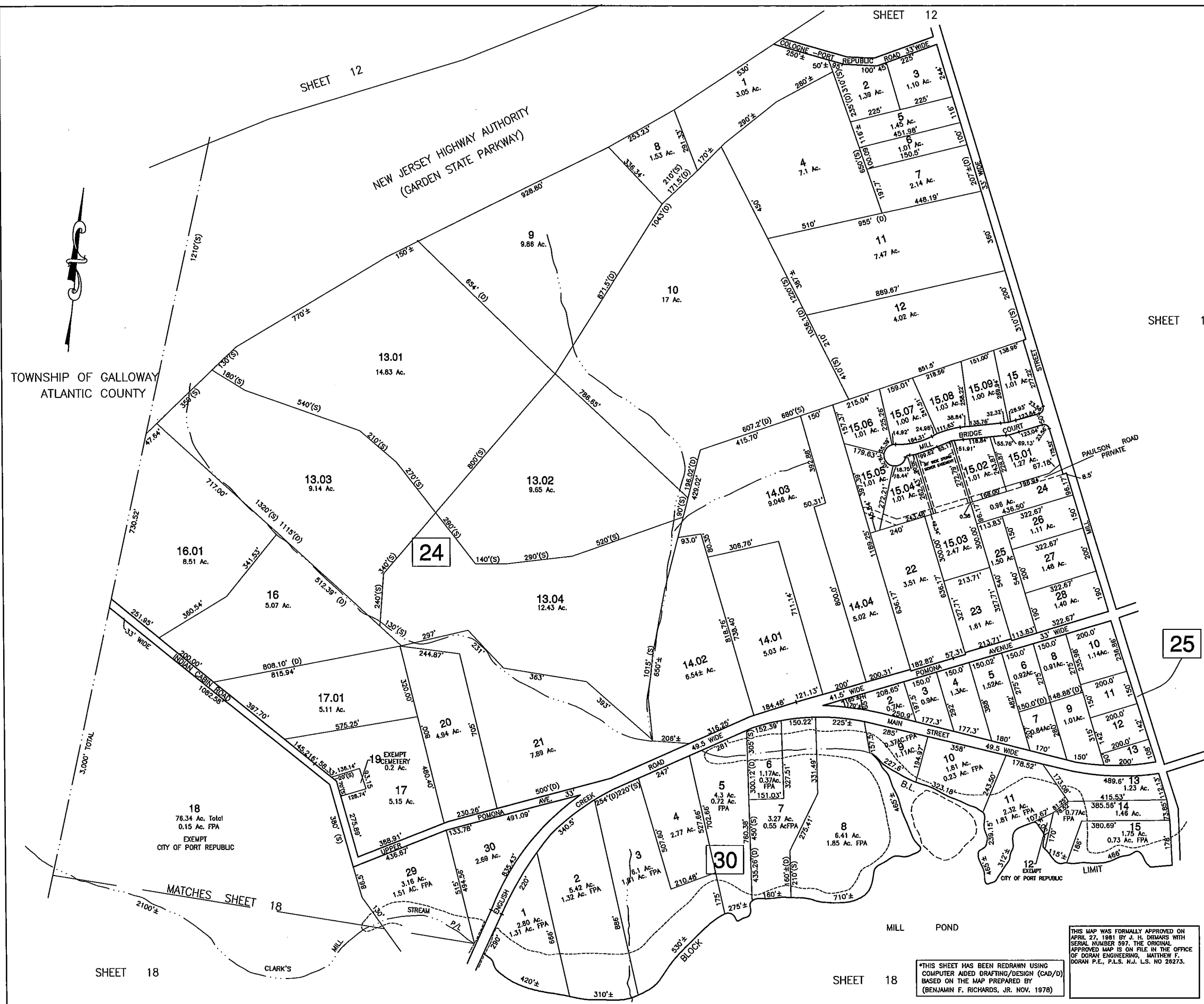
REVISIONS			
DATE	BY	LIC. No.	COMMENTS

TOWNSHIP OF GALLOWAY
ATLANTIC COUNTY

TAX MAP
CITY OF PORT REPUBLIC
ATLANTIC COUNTY NEW JERSEY
SCALE 1"=200' NOVEMBER 15, 1978
BENJAMIN F. RICHARDS, JR. PE & LS
217 WEST MAIN STREET
MAYS LANDING, NEW JERSEY 08330
TO SHOW CONDITIONS AS OF JAN. 1, 2014

*THIS SHEET HAS BEEN REDRAWN USING
COMPUTER AIDED DRAFTING/DESIGN (CAD/D)
BASED ON THE MAP PREPARED BY
(BENJAMIN F. RICHARDS, JR. NOV. 1978)

THIS MAP WAS FORMALLY APPROVED ON
APRIL 27, 1981 BY J. H. OTHMARS WITH
SERIAL NUMBER 597. THE ORIGINAL
APPROVED MAP IS ON FILE IN THE OFFICE
OF DORAN ENGINEERING, MATTHEW F.
DORAN P.E., P.L.S. N.J. L.S. NO 28273.

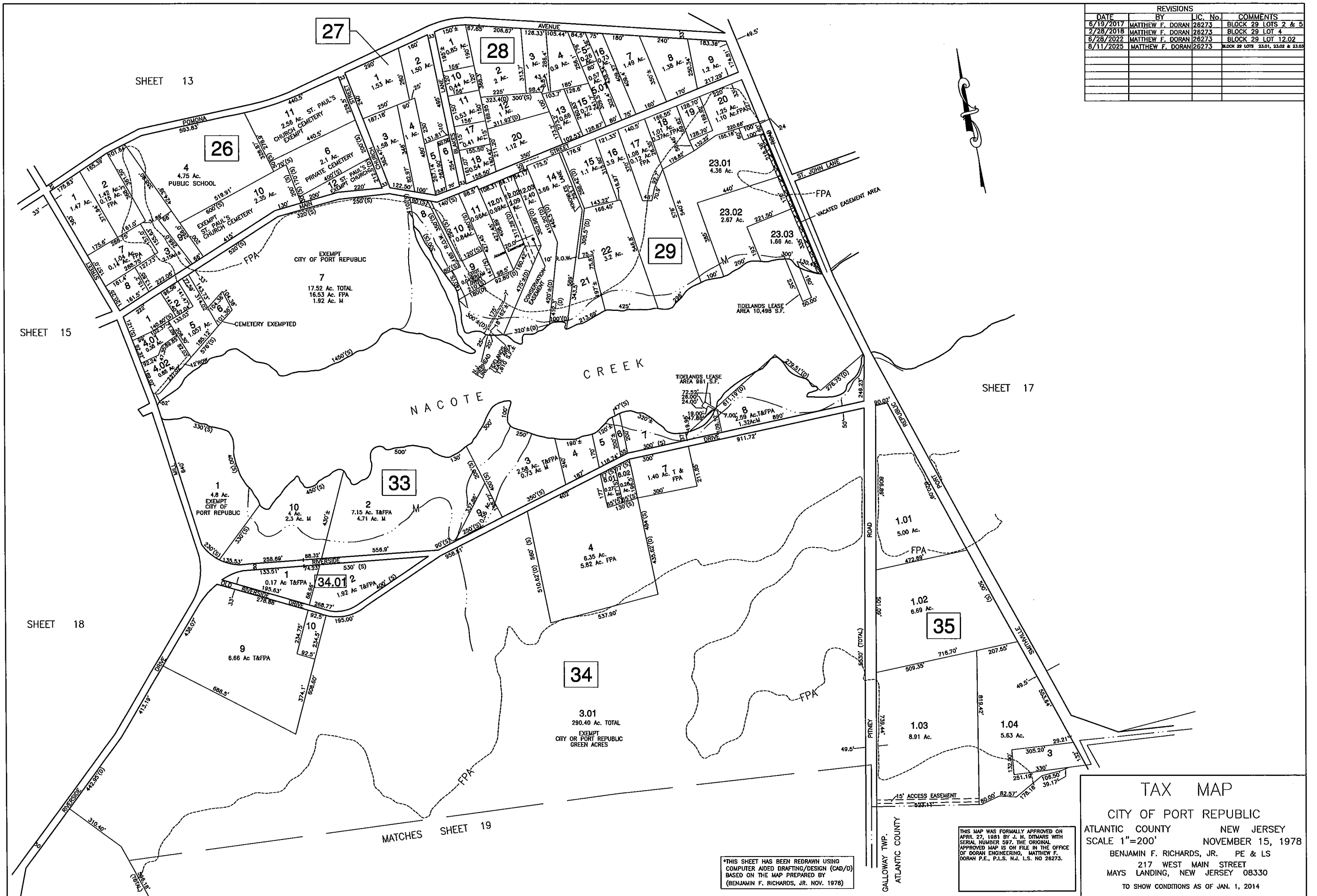


REVISIONS			
DATE	BY	LIC. No.	COMMENTS
8/11/2025	MATTHEW F. DORAN	26273	VARIOUS

TAX MAP
CITY OF PORT REPUBLIC
ATLANTIC COUNTY NEW JERSEY
SCALE 1"=200' NOVEMBER 15, 1978
BENJAMIN F. RICHARDS, JR. PE & LS
217 WEST MAIN STREET
MAYS LANDING, NEW JERSEY 08330
TO SHOW CONDITIONS AS OF JAN. 1, 2014

THIS MAP WAS FORMALLY APPROVED ON
APRIL 27, 1981 BY J. H. DEMARS WITH
SERIAL NUMBER 597. THE ORIGINAL
APPROVED MAP IS ON FILE IN THE OFFICE
OF DORAN ENGINEERING, MATTHEW F.
DORAN P.E., P.L.S. N.J. L.S. NO 26273.

*THIS SHEET HAS BEEN REDRAWN USING
COMPUTER AIDED DRAFTING/DESIGN (CAD/D)
BASED ON THE MAP PREPARED BY
(BENJAMIN F. RICHARDS, JR. NOV. 1978)

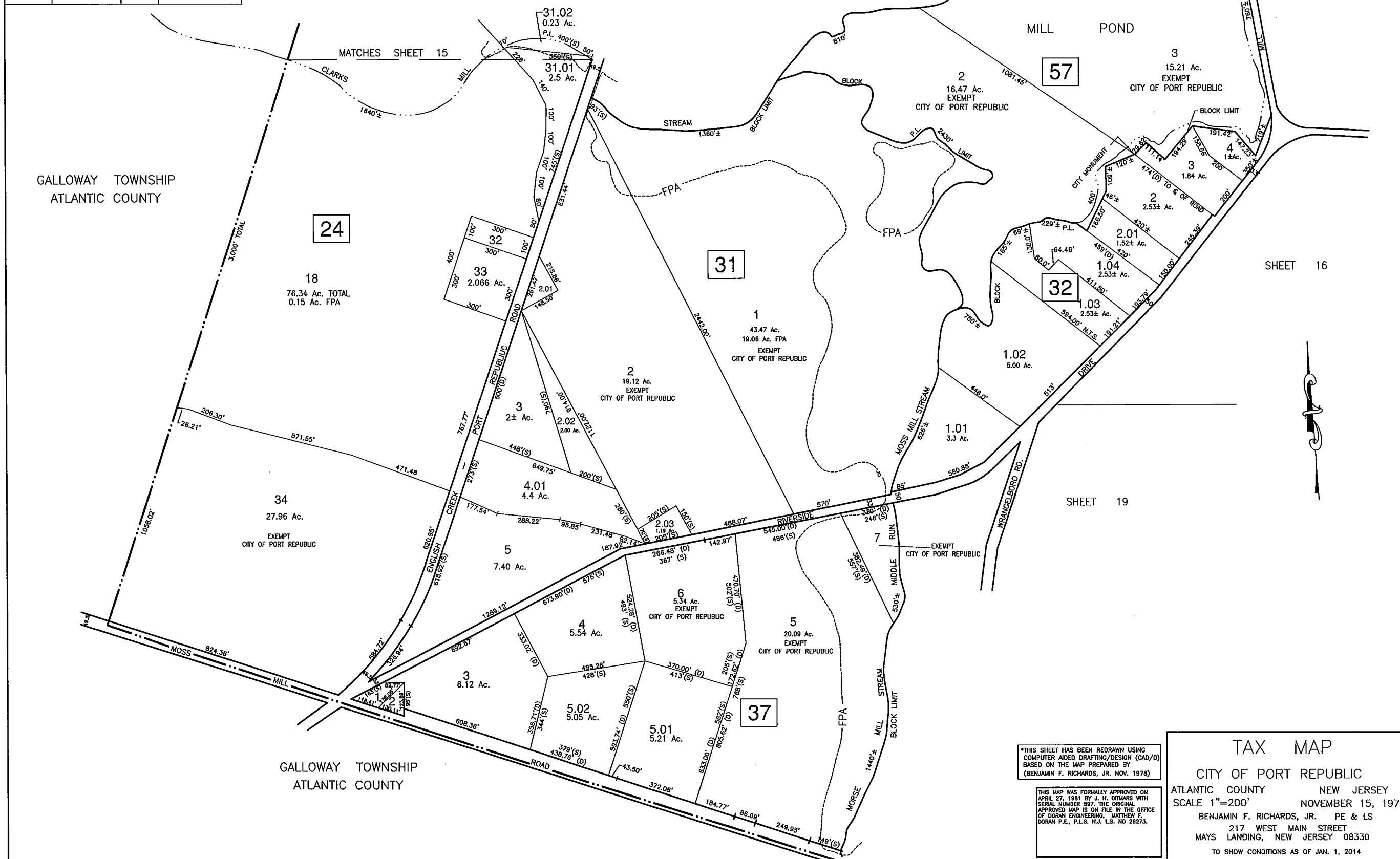


[illegible]

NOTE: THE CLARKS WILL STREAM AND THE NORTHEND EDGE OF
THE MILL POND IS THE WACHT LINE.

SHEET 15

SHEET 16



*THIS SHEET HAS BEEN REDRAWN USING
COMPUTER AIDED DRAFTING/DESIGN (CAD/D)
BASED ON THE MAP PREPARED BY
(BENJAMIN F. RICHARDS, JR. NOV. 1978)

THIS MAP WAS FORMALLY APPROVED ON
APRIL 27, 1981 BY J. H. DITMARS WITH
SERIAL NUMBER 597. THE ORIGINAL
APPROVED MAP IS ON FILE IN THE OFFICE
OF DORAN ENGINEERING, MATTHEW F.
DORAN P.E., P.L.S. N.J., L.S. NO 26273.

TAX MAP

CITY OF PORT REPUBLIC
ATLANTIC COUNTY NEW JERSEY
SCALE 1"=200' NOVEMBER 15, 1978
BENJAMIN F. RICHARDS, JR. PE & LS
217 WEST MAIN STREET
MAYS LANDING, NEW JERSEY 08330
TO SHOW CONDITIONS AS OF JAN. 1, 2014

